

AS-525 AxTrax

Networked Access Control Client/Server PC Software

Rosslare's AS-525 AxTrax is an advanced platform client/server PC software suite enabling management of a modular networked Access Control system. The user friendly system is controlled by multiple, local or remote PC operators, working in online and offline modes. Connectivity with sub-networks over TCP/IP, PSTN, or RS-485 provides high flexibility.

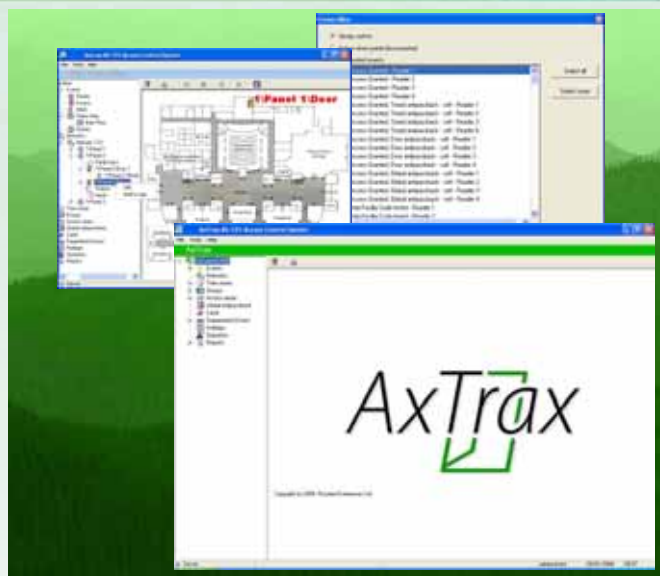
AS-525 AxTrax is license-free for systems with up to 64 panels (ACU's), and has three additional license levels. It runs on PCs and networks with Microsoft Windows® Vista or XP.

General Description

AS-525 AxTrax is an intuitive and user-friendly scalable software suite for system management, with reporting, backup, firmware upgrades, and more. It allows systems to upgrade as capacity grows.

AS-525 AxTrax supports multiple networks of door controllers, which are connected to a networked PC in either 24-hour Online mode or periodically connected Offline mode. Client/Server architecture allows access to the system from multiple terminals within a local network. AxTrax supports AC-215, AC-225 and AC-525 access control panels with the additional Door and IO expansion modules, the MD-D02 and MD-IO84.

The AS-525 AxTrax offers a powerful set of features, including intelligent addressing and configuration of all the parameters. Once a link is programmed, locally or remotely, the system automatically remembers the connection.



Main Features

- Cutting-edge development platform
- Microsoft Windows compatible
- Software security protection
- Advanced alarm handler
- System operator privileges
- Automatic national holidays entry
- On-the-fly log off and log on
- Automatic panel detection
- Advanced panel link settings for full control over inputs, outputs and events
- User counter per Reader/User
- Embedded modem and network management stored for any sub-networks
- Compatible with AC-215, AC-225, AC-525 and related expansion modules
- One CD installs as either server or client

PROFESSIONAL GRADE FEATURES

- Free basic level-0 server software license for up to 64 panels (ACU's). Three incremental license levels can be activated by buying a Rosslare HASP key (CD-ROM is provided with the package)
- User-friendly PC software with intuitive layout reduces complexity of access control
- Manages user data, photo and information fields, access rights, alarms, strike time, and door mode, all from one central location
- Produces reports from acquired data, such as entry and exit times, and any types of alarms, by user, location, and time
- Available in a large variety of languages
- Compatible with additional software modules from Rosslare for time and attendance and photo ID card development
- Backward compatibility with VeriTrax AS-215 and AS-225

AS-525 AxTrax Networked Access Control Client/Server PC Software

Product Specifications

COMPUTER SPECIFICATIONS	
• Operating system	Microsoft Windows XP (SP2), Server 2003, Windows Vista
• PC Requirement	Pentium 4 or higher, 256 MB RAM (512 MB recommended), CD ROM, 30 MB HDD space (60 MB for SQL Server), LAN card for TCP/IP networking, RS232 D9 serial ports, VGA monitor
DATABASE FEATURES (DB)	
• DB format	SQL Server 2005, password protected
• Embedded PDF files	Latest software and hardware manuals
• DB backup	Backup now option or clear all now option Complete DB export configuration or by event (selectable backup and restore) Auto file naming for backups Automatic backups
• Database retention	Programmable period
MAIN FEATURES	
• Online/Offline	Operates in both modes with 10,000 event log on panel
• User capacity	30,000 access right users and 30,000 access groups
• Sub-network of controller	Up to 1023 networked panels, up to 4092 Doors with door expansion module MD-D02
• Hardware	32 panels per sub-network Supports TCP/IP sub-networks over LAN/WAN, drivers included Supports modem sub-networks Supports Serial COM Port sub-networks
• Time zones	Up to 32 time zones that can be assigned to Access/Reports/Update
• Holidays	Up to 64 holiday dates, with auto population for several countries
• Supports multiple reader modes	PIN only, PIN and card, PIN or card, card only, Desktop
• Alarm handler	Advanced event color coding of Tamper/Ajar/Forced/Passback/Input Alarm events with confirmation status
MAPS	
• Floor layout plans	Floor layout as JPG, GIF, or BMP graphic formats can be imported into the system for graphical referencing

System Components

The AS-525 AxTrax Client/Server supports VeriTime and Attendance software module (AS-225M1) and VeriCard Photo ID Software Module (AS-225M2) support Rosslare entire range of Readers and accessories.

We recommend Rosslare MD-N33 RS-232 Modems, MD-N32 TCP/IP Gateway, and MD-14 RS-485 Converter.



Additional Information

Please visit our website for documentation and sales information: <http://www.rosslaresecurity.com/>

Windows® is a trademark of Microsoft Corporation.

Distributed by:

VERSION 2.0
5501-0010792-00
© Copyright Rosslare 2005-2007

