

AS-525

ViTrax Digital Video and Surveillance Software

Software Manual



July 2008

ROSSLARE

SECURITY PRODUCTS

Table of Contents

1. Introduction.....	4
1.1 System Features	4
1.2 AS-525AV ViTrax Server and Client	5
1.3 System Specifications and Requirements	6
1.4 How to Use this Manual	8
2. Installing AS-525AV ViTrax PC Software	9
2.1 Connecting to the PC	9
2.2 Starting AS-525AV ViTrax Installer	9
2.3 Installing the Server Configuration.....	14
2.4 Adding the Server to the Client.....	21
3. System Overview	24
3.1 Initiating AS-525AV ViTrax	24
3.2 AS-525AV ViTrax Main Window	25
3.3 Menu Bar	26
3.4 Toolbar.....	35
3.5 Structure Pane	37
3.6 Server Configuration.....	39
4. Configuring Cameras	52
4.1 Setting up AC-525 Connection	52
4.2 Setting up Arecont® Network IP Cameras	62
4.3 Network IP Cameras	68
5. Setting System Options.....	77
6. AS-525AV ViTrax Video Capabilities.....	83
6.1 Making Video Adjustments	83
6.2 Exporting Video Frames	84
6.3 Enabling Video Transfer	88
6.4 Creating Custom Layouts	90

Table of Contents

6.5 Map Module Feature..... 94

6.6 Archiving Integrity Wizard.....97

6.7 Archiving Backup Wizard99

6.8 Playback Video 103

6.9 Exporting Video..... 110

7. Upgrading AS-525AV ViTrax Software113

Appendix A. Limited Warranty114

Appendix B. Technical Support116

1. Introduction

Thank you for purchasing the AC-525 Visual Access Controller Unit (VACU) and AS-525AV ViTrax PC software.

The AC-525 is an advanced multi-door networked access controller coupled with a digital video server and cutting-edge DVR technology. The integrated panel supports two analog camera inputs. It has a built-in embedded Linux OS with web server, which enables advanced network communication options. The AC-525 streams video in ISO standard compliant MPEG-4 (SP) in complete synchronization with real-time access control data.

AS-525AV ViTrax is a digital video recording and remote surveillance Client/Server suite for Microsoft® Windows XP. It supports major Network (IP) Cameras, and Directshow compatible devices such as USB cameras.

AS-525AV ViTrax features a proprietary multimedia database, DVR Watchdog which restarts the server automatically in case of PC power failure recovery to resume local and remote data flows, and a Google Maps interface which lets you place mark cameras on actual maps for easy browsing.

This manual explains how to install and use AS-525AV ViTrax PC software with the AC-525 Visual Access Controller Unit. For more information on the AC-525 system, refer to the AC-525 Access Controller Unit (VACU) Hardware Installation manual.

1.1 System Features

AS-525AV ViTrax makes it possible to view every aspect of access control within a single site. The system includes a built-in software security system that controls access to the system database and logs all operations performed.

Using AS-525AV ViTrax wizard, users can custom design the system to meet their specific needs.

Software Security

Access to AS-525AV ViTrax software is password controlled. It is possible to grant different operators restricted security rights with access to only specified elements of the system or with read-only access.

1.2 AS-525AV ViTrax Server and Client

AS-525AV ViTrax software provides full video management for the AC-525 and third party servers. The software package consists of two applications:

- AS-525AV ViTrax Server
- AS-525AV ViTrax Client software

AS-525AV ViTrax Server

AS-525AV ViTrax operates through a dedicated server computer, which communicates with the access control panels and can serve an unlimited number of network clients.

AS-525AV ViTrax Server is a behind-the-scenes application that captures, processes, and records video before serving it to a local or remote AS-525AV ViTrax Client.

Install AS-525AV ViTrax Server on the computer that controls the Access Control panels and manages the database. AS-525AV ViTrax includes a full suite of administrator functions, including the ability to view multiple local and remote sources, record video for local or remote playback later, export recordings to preserve and present as evidence, change video parameters, and manage the database.

AS-525AV ViTrax Client

AS-525AV ViTrax Client has a limited operation set, and can only send or receive information from Visual Access Control panels when AS-525AV ViTrax Server is operating and connected to the panel network.

1.3 System Specifications and Requirements

The following are the system capabilities and the system requirements.

AS-525AV ViTrax System Requirements

Operating System	Microsoft ®Windows 2000 Windows XP Home Windows XP Professional, Windows Vista Windows Server 2003 x 64
Motherboard	Intel® 915, 945, and 965 Family especially for using Frame Grabbers capture boards
Memory	Intel® 945G Express Chipset with a minimum of 64 MB memory
HDD	Depends on frame-rate, compression, and storage period desired 250 GB recommended
Network	LAN card required for TCP/IP networking

Database Features (DB)

DB Format	Microsoft® MSSQL and Proprietary Files – Password Protected
Embedded PDF Files	Most current Software and Hardware Manuals
DB Backup	Backup Now Option/ Clear All Now Option DB Export Config and/or Events – Selectable Backup and Restore Auto File Naming for Backups Automatic Backups
DB Export Formats	.mp4 and .avi file exports
Database Retention	Programmable Period

Networks

Supported Access Control Panel Models	AC-525 AC-525 with MD-IO84 I/O extension board or MD- D02 Door Expansion Board
Panel Networks	Serial (RS-485)

Introduction

Communication Interface TCP-IP

Video Surveillance

Server Mode Local Network and Remote network
Server and Client module

Streaming Support ISO Standard MPEG-4, Intel IPP

Selectable Viewports Matix Viewports

PTZF Presets Two per viewport support Pelco-D

Video Recording Server

Recording MJPEG/JPEG compression

Scheduler Schedule Pre-and Post Alarm by date and time or by event

Motion Detection Selectable Motion areas and Sensitivity in FOV Zones

Advanced Compression Proprietary Storage with Custom Retrieval Tools

CPU

The recommended CPU depends on the number of cameras you connect to the system:

	Number of Cameras	Recommended CPU	Recommended RAM
Personal	1	P4 2.4 Ghz	256 MB
Basic	4	P4 2.8 Ghz	512 MB
Professional	9	PD 3.0 Ghz	768 MB
Advanced	16	Core™2 Duo	1024 MB
Enterprise	unlimited	Xeon®**	n/a**

** Contact Rosslare representatives to figure out the recommendations for the installation.



Note:

The AC-525 system is a multi-threaded application, so using multi-core CPU is strongly recommended.

1.4 How to Use this Manual

This manual is constructed in a step-by-step format but can also be used as a quick reference guide.

Installers who are new and unfamiliar with the setup procedure should read this manual from cover to cover and should read each chapter in the order that it is presented. However, if you are already familiar with AS-525AV ViTrax software, this manual can be used as a quick reference guide in order to fine tune the knowledge about AS-525AV ViTrax system.

A PDF of this manual can also be found on AS-525AV ViTrax software installation CD.



Note:

This manual refers to AS-525AV ViTrax software version 1.6.6 and above.

2. Installing AS-525AV ViTrax PC Software

The installation of AS-525AV ViTrax PC software package from the CD-ROM is a mostly automated process done by a smart installer program.

The installer helps with tasks such as entering a unique server name, administrator login setup, enabling access from remote AS-525AV ViTrax clients, TCP/IP port selection, and application running mode. You can always come back to this Wizard later to change the settings through the **Start** Menu.

The software consists of two applications, AS-525AV ViTrax Server and AS-525AV ViTrax Client. During the installation process, you are presented with a choice to install either both of the available applications or just one of them.

AS-525AV ViTrax Server requires activation with the activation key provided when the product was purchased. The server can only be activated on one computer. If at a later date you need to move the installation to another computer, please contact Rosslare Technical Support on +972 3 938-6838 or email at support.eu@rosslaresecurity.com



Note:

Please remember to keep your activation key in a safe place. If you do lose the activation key, it can be viewed by selecting About from the menu bar.

AS-525AV ViTrax Client software does not require activation and can be installed on as many computers as you want.

2.1 Connecting to the PC

Before using the software, it is important to make sure the AC-525 hardware and any additional components, i.e. cameras, are connected correctly.

Create a connection between the hardware and the computer. The AC-525 is not connected directly to the computer but to the IP network.

Please refer to the AC-525 Hardware Installation manual in order to configure the hardware to the computer.

2.2 Starting AS-525AV ViTrax Installer

Install AS-525AV ViTrax software using the installation CD-ROM.

To begin installing AS-525AV ViTrax:

1. Close all applications.
2. Insert the CD into the computer's CD drive.

Installing AS-525AV ViTrax PC Software

If AS-525AV ViTrax Setup Wizard does not start automatically, click **Start** on the Windows taskbar, and click **Run**. Enter **D:\Setup**, where D is the letter that corresponds to the CD drive.

For example, if the CD drive is the E drive, enter **E:\setup**.

3. Click **Install** to continue the installation. The Welcome to the Install Shield Wizard window opens.

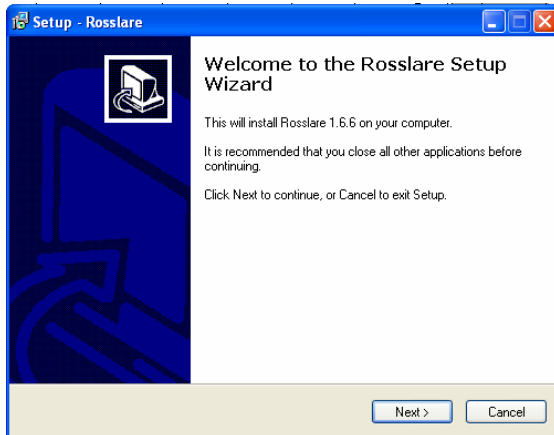


Figure 1: Welcome Rosslare Setup Wizard Window

4. Click **Next** to display the Software License Agreement window. To cancel, click **Cancel** to quit AS-525AV ViTrax PC software installer.

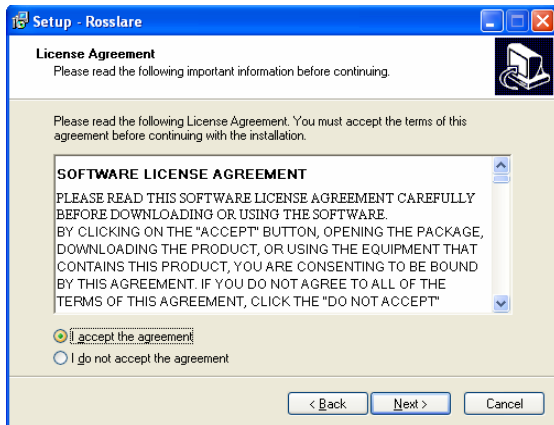


Figure 2: Software License Agreement Window

Installing AS-525AV ViTrax PC Software

- After reading the Software License Agreement, choose **Accept**. Click **Next** to continue with the installation.
- Choose the Destination Location.

The installer prompts you to enter the destination location for the installation. This is where AS-525AV ViTrax PC software is stored on the hard drive.

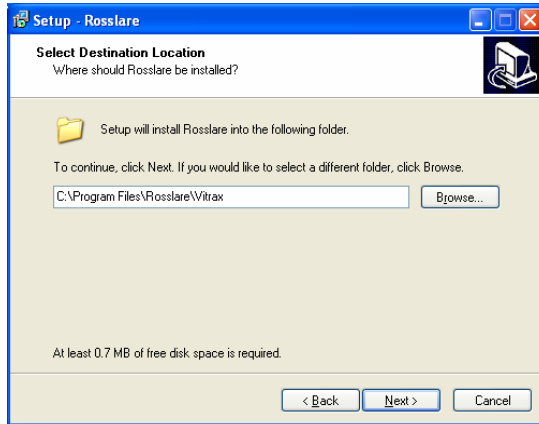


Figure 3: Setup Destination Window

- Click **Next** to accept the default installation location and continue with the installation or click **Browse** to change the installation location.
- After selecting the new installation location, click **Next** to continue with the installation. The Install Components window opens.

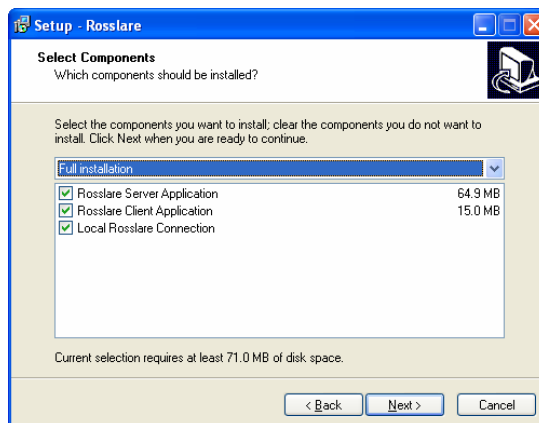


Figure 4: Install Components Window

9. Select the components you want to install.

Check the **ViTrax Server Application** to select the server or check the **ViTrax Client Application** to select the client.

If you want to be able to view and manage the server from the same machine, check both **ViTrax Server Application** and **ViTrax Client Application**.

10. Click **Next** to continue with the software installation.
11. Choose to place a shortcut for this application in the Start Menu Folder so that every time the host computer reboots, it automatically restarts the AS-525AV ViTrax software.

This window allows you to select the Start menu folder.

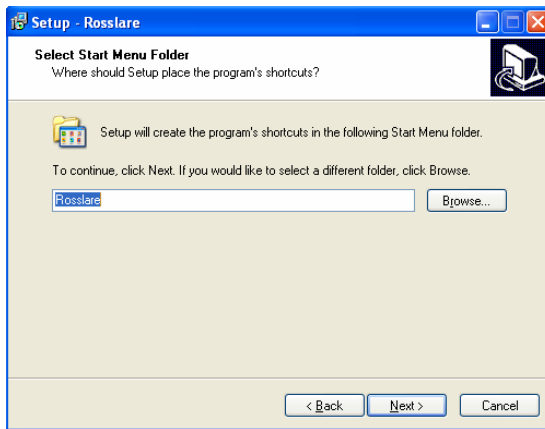


Figure 5: Select Start Menu Window

12. Click **Next** to accept the default shortcut location and continue with the installation or click **Browse** to change the shortcut location.

Installing AS-525AV ViTrax PC Software

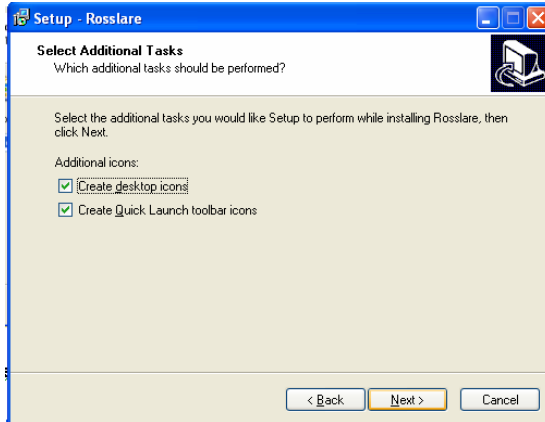


Figure 6: Select Additional Tasks Window

13. Check the relevant additional tasks as required and click **Next** to continue.

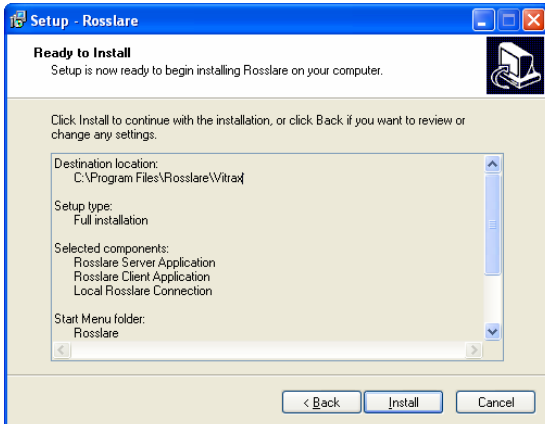


Figure 7: Ready to Install Window

All the installation settings are now entered. Installation can now begin. Click **Cancel** to cancel the installation, or, click **Install** to install AS-525AV ViTrax software.

When the Setup Completed window appears, the software is successfully installed. By default, the **Run server setup wizard (recommended)** checkbox appears checked. If you do not want to launch the Server Setup Wizard at this stage, uncheck the box.

14. Click **Finish** to exit the installer.

2.3 Installing the Server Configuration

Before using the software, you must install the server configuration using the Server Setup Wizard and activate the software.

To install the server configuration:

1. In the last screen of the Rosslare Setup Wizard, make sure the **Run server setup wizard (recommended)** checkbox is checked. Click **Finish**.

or

From the **Start** menu, select **Rosslare → Tools → DVR Server Setup Wizard**.

The Server Setup wizard opens.

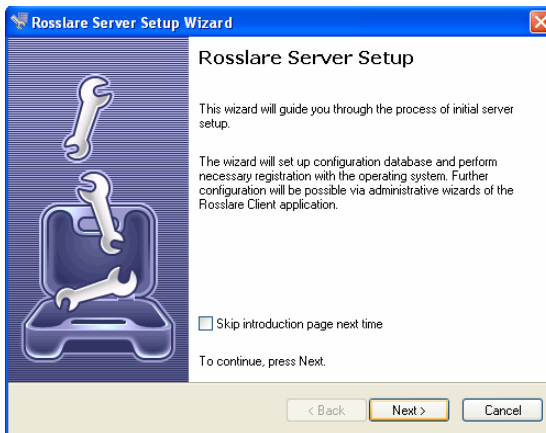


Figure 8: Server Setup Wizard Window

This wizard guides you through the initial server setup. Before installing the server, you will be prompted to activate the software.



Note:

The introduction dialog box may or may not open depending on whether someone has checked the checkbox **Skip introduction page next time**. Therefore, the following dialog box will either open first or second in the Camera Setup Wizard.

Activate the Software

The software must be activated in order to use it and to ensure proper support.

You can activate the software in the following ways:

Installing AS-525AV ViTrax PC Software

Internet Activation

Internet activation is the quickest and most convenient way to activate the software if the machine is connected to the Internet.

Phone Activation

Phone Activation is the other option to choose if you are not connected to the Internet to be able to activate the software.

No Activation

The No Activation option in the Activation Wizard uses the demo version of AS-525AV ViTrax. This option limits use of the software to Shareware use, which are only basic features and configuration capabilities.

To activate the software via Internet or phone:

1. Start AS-525AV ViTrax software from the Windows **Start** menu or click the AS-525AV ViTrax icon on the desktop.
2. When the Rosslare Activation Wizard opens, click **Next** to continue the activation. The Product Activation Method window opens.

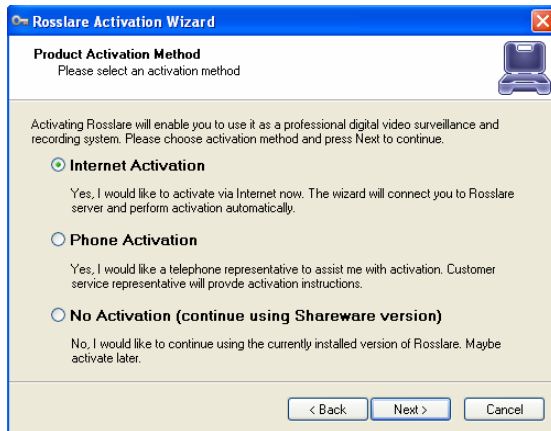


Figure 9: Product Activation Method Window

3. To activate the full version of the software, select **Internet Activation** if the machine is connected to the Internet or **Phone Activation** if the machine is not connected to the Internet.
4. Click **Next** to continue the activation.

If you selected the **Internet Activation** option, the Activate Product over Internet window opens.

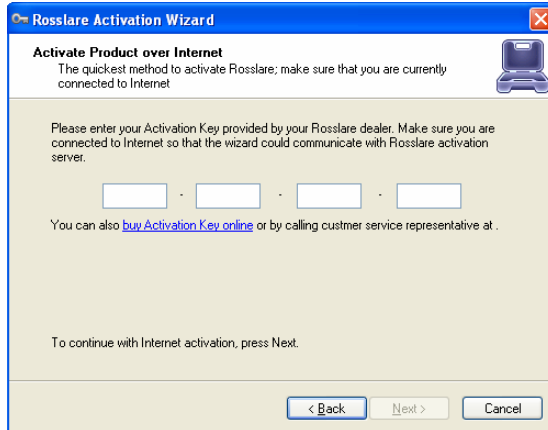


Figure 10: Activate Product over Internet Window

5. Enter the activation key that is found on the software disk.

If you selected the **Phone Activation** option, the Product Activation over the Phone window opens.

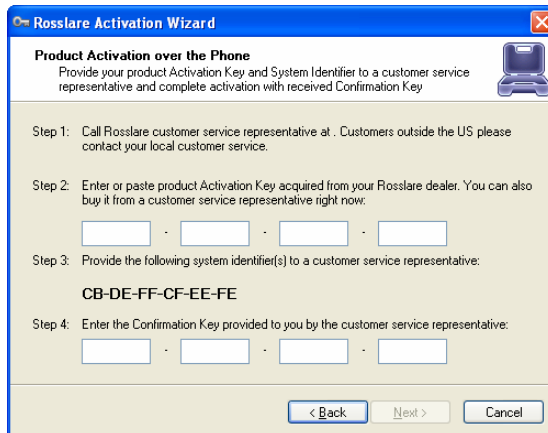


Figure 11: Activation Wizard Window

6. Call a Rosslare representative at +972-3-938-6838 to be provided with the Confirmation Key.
7. Enter the Activation Key in **Step 2** on the screen. You can find the Activation Key on the software disk.
8. Provide the system ID that appears in this window to the customer service representative on the phone.

Installing AS-525AV ViTrax PC Software

9. Enter the Confirmation Key provided by the customer service representative on the phone in **Step 4** on the screen.
10. Click **Next** to continue with the activation. The activation finishes. The Activation Completion window displays the description of the edition and the access limitations.
11. Click **Finish** to exit the activation wizard and continue installing the server configuration.

To select the No Activation option:

1. Follow steps 1 and 2 in the above activation process.
2. Once the Product Activation Method window opens, select. **No Activation (continue using Shareware version)**.
3. Click **Finish** to exit the Activation Wizard and continue installing the server configuration.

Install the Server Configuration

After activating the software, continue installing the server configuration.

To install the server configuration:

1. Specify the server properties, such as unique identifier, title, and database settings in the Server Properties window.

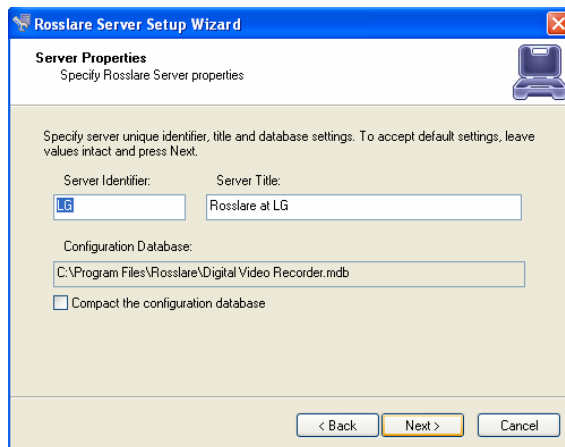


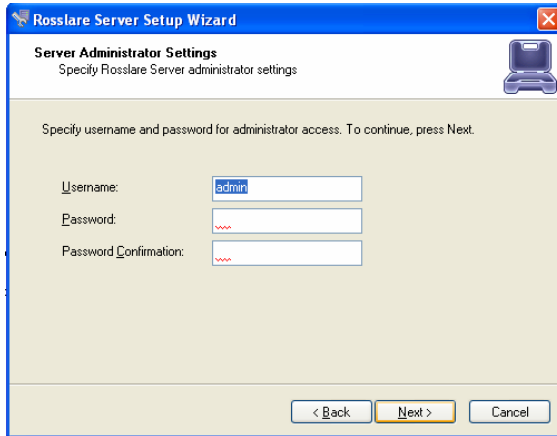
Figure 12: Server Properties Window

Enter the Server ID and Server Title.

Choose the destination location for the configuration database.

Check the **Compact the configuration database** checkbox to optimize the configuration database in the future.

2. Click **Next** to continue the Server Setup Wizard. The Server Administrator Settings window opens.

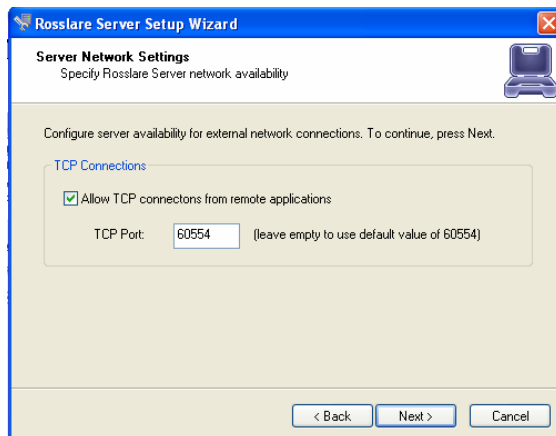


The screenshot shows the 'Server Administrator Settings' window of the Rosslare Server Setup Wizard. The window has a blue title bar with the text 'Rosslare Server Setup Wizard' and a close button. Below the title bar, the window title is 'Server Administrator Settings' with a subtitle 'Specify Rosslare Server administrator settings'. The main area contains the instruction 'Specify username and password for administrator access. To continue, press Next.' followed by three input fields: 'Username:' with the text 'admin', 'Password:', and 'Password Confirmation:'. At the bottom, there are three buttons: '< Back', 'Next >', and 'Cancel'.

Figure 13: Server Administrator Settings Window

This window determines the settings for the Administrator. Leave the default user name to **admin** and enter a unique password in both lines. You can add additional users at a later time.

3. Click **Next** to continue with the Server Setup Wizard.
4. Determine the Server Network and Port Settings.



The screenshot shows the 'Server Network Settings' window of the Rosslare Server Setup Wizard. The window has a blue title bar with the text 'Rosslare Server Setup Wizard' and a close button. Below the title bar, the window title is 'Server Network Settings' with a subtitle 'Specify Rosslare Server network availability'. The main area contains the instruction 'Configure server availability for external network connections. To continue, press Next.' followed by a section titled 'TCP Connections' which includes a checked checkbox 'Allow TCP connectons from remote applications' and a 'TCP Port:' field with the value '60554' and a note '(leave empty to use default value of 60554)'. At the bottom, there are three buttons: '< Back', 'Next >', and 'Cancel'.

Figure 14: Server Network and Port Settings Window

Installing AS-525AV ViTrax PC Software

The default firewall port that the Rosslare uses is 60554. You can change it to any port as long as it is open on the firewall. Check with the network administrator or internet service provider about the appropriate firewall settings.

5. Click **Next** to continue with the Server Setup wizard. The Server Execution Mode window opens.

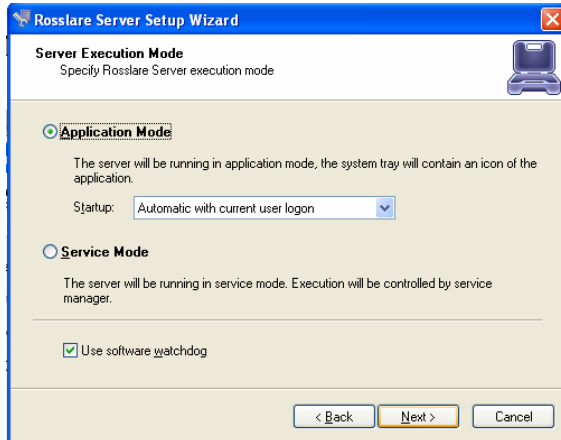


Figure 15: Server Execution Mode Window

This window has two options:

- **Application mode** — starts the program manually via three options in the dropdown menu:
 - **Manually** — double-click the program to get it started
 - **Automatically with any user login** — initiates the software on when any user logs into Windows on that machine
 - **Automatically with current user login** — the user currently logged into Windows is the user that activates AS-525AV ViTrax upon Windows login
- **Service Mode** — the software always runs in the background even though nobody has yet logged into Windows. This means you can lock everyone out of Windows and never have to worry about any of the data. Also, if the power ever goes out, upon power recovery, the system turns on and nobody needs to physically log into windows or turn AS-525AV ViTrax software on in order to keep the data flowing both locally and remotely.



Note:

The **Service Mode** is the recommended option.

If AS-525AV ViTrax software is setup on **Service Mode** it can be stopped by browsing the windows services or by using the **DVR Server Setup Wizard**. (See Step 1 above).

6. Click **Next** to continue with the Server Setup wizard. The Server Execution Control window opens.

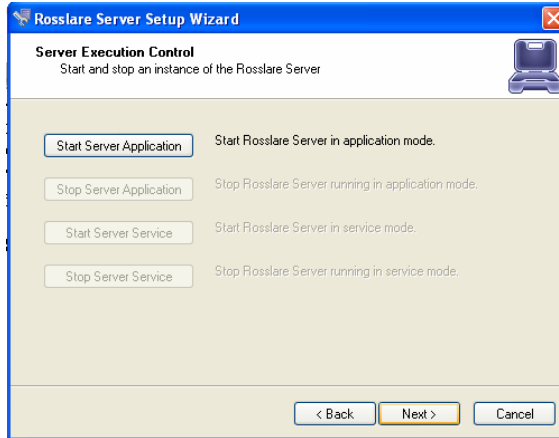


Figure 16: Server Execution Control Window

The options shown here depend on the choice made in the previous screen. Choose to either **Start Server Application** or **Start Server Service**.

7. Click **Next** to continue with the Server Setup wizard.
8. When the Wizard Completed window appears, click **Finish** to exit the installer. The DVR Server has been successfully installed.

2.4 Adding the Server to the Client

Before using AS-525AV ViTrax software, you must add the server information to the client application.

To add the server information:

1. Double-click the ViTrax Client connection icon on the desktop. The main screen is displayed.



Note:

A Warning dialog box appears, stating that there are no video cameras found on the local server. If you click **Yes**, the software scans for cameras using auto detection (in the Network Scan Wizard). This option is only applicable for IP cameras. If you click **No**, you can add the cameras manually (in the Camera Setup Wizard). Click **Cancel** so you can continue adding the server to the client.

2. From the Server menu, click **Server** and then **Add Server**.
3. When the Add New Server Wizard appears, click **Next**. The Adding New Server window opens.

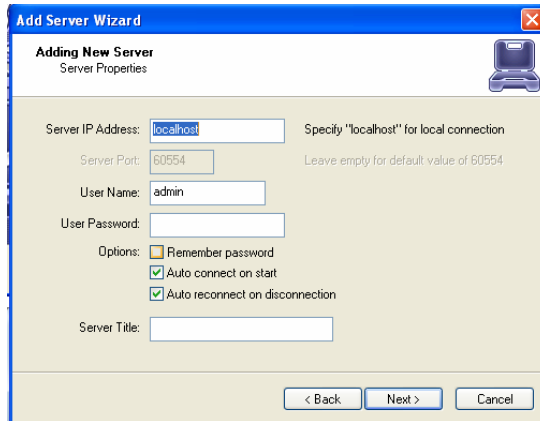


Figure 17: Adding New Server Window

The following data is added in this window:

Server IP Address

The IP or the DNS of the server you want to connect.

If the server is on the same machine, type **localhost**.

Server Port

The port the server is running on.

User Name

Enter username.

Options:

- Remember password
- Auto connect on start
- Auto reconnect on disconnection

If you choose to leave this field unchecked, the server requests a password every time you log on .

Selecting this option auto connects to the server as soon as you open the Client.

Selecting this option instructs the program to automatically reconnect you in the event of disconnection.

Server Title

Enter server title

4. To continue adding a server, click **Next**. The Wizard Completed window opens. Click **Finish**.
5. Click **File** and then **Save As**.
6. Click the Desktop icon to select Desktop in the **Save in** line.
7. Find the ViTrax Client and highlight it so the name appears in the **Save in** line.

Installing AS-525AV ViTrax PC Software

- When the program asks to override the client which already exists, click **Yes**.



Note:

If you do not click **Yes**, the new server is not saved in the server list on the left and you have to re-enter the information when you reopen the program.

The client installation is now complete. You now have video feed from the connected cameras.

3. System Overview

AS-525AV ViTrax is controlled through an easy to use interface featuring:

- a tree-view list of all aspects of the site set-up
- a toolbar for standard operations

3.1 Initiating AS-525AV ViTrax

This section explains how to start the software and login to the main window.

1. Before you start AS-525AV ViTrax software, you must first turn on the server. Select from the **Start** menu → **Programs** → **Rosslare** → **DVR Server** or double-click the icon below found on the Windows desktop.



Figure 18: DVR Server Icon

2. Once the server is connected, you can start AS-525AV ViTrax software. Select from the **Start** menu → **Programs** → **Rosslare** → **ViTrax Client** or double-click the icon on the Windows desktop.



Figure 19: AS-525AV ViTrax Access Control System Icon

The Authorization dialog box for the remote server opens.

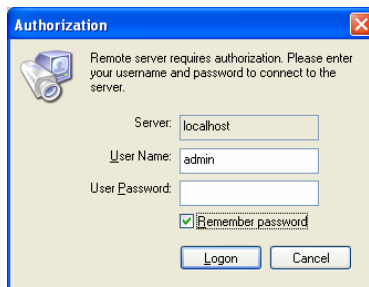


Figure 20: Authorization Dialog Box

3. Type the password you chose in the Server Setup Wizard. Click **Logon** to have access to AS-525AV ViTrax.
AS-525AV ViTrax Client main window opens.

3.2 AS-525AV ViTrax Main Window

All the central functionality of AS-525AV ViTrax is available from its main window.

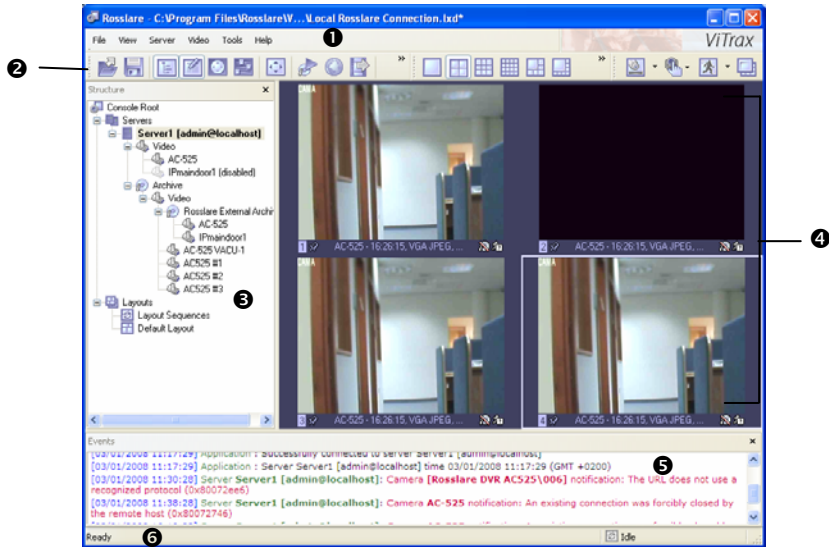


Figure 21: AS-525AV ViTrax Main Window

AS-525AV ViTrax is divided into six sections.



Note:

This screen is not the initial screen that appears upon start-up. It is only used to better explain the system overview.

❶	Menu Bar	Access to general operation and set up of the system
❷	Toolbar	Contains icons for key management tasks
❸	Structure Pane	Configure, monitor, and control client and server elements in the system
❹	Display Pane	Displays the hierarchy of the selected element

5	Events Pane	Lists the time and date record of server-client connection
----------	--------------------	--

6	Status Bar	Displays general status information such as system readiness and screen layout sequence options.
----------	-------------------	--

3.3 Menu Bar

Access to the general operation and set up of the system is through the menu bar. It contains menu options such as the file, view, server, video, tools, and help menus.

File

Manage the client files by clicking on tasks in the menu bar, by pressing the shortcut keys on the keyboard, or by clicking the related toolbar icons, when applicable.

New	Creates a new AS-525AV ViTrax client file with the file extension of .lxd. Access this task on the keyboard with shortcut key Ctrl-N.
Open	Opens previous AS-525AV ViTrax configuration files. The video stream of the selected file displays in the Display Pane. Access this task on the keyboard with shortcut key Ctrl-O or by clicking the Open Configuration icon on the toolbar. (See Toolbar on page 35.)
Save	Saves current client configuration file. Access this task on the keyboard with shortcut key Ctrl+S or by clicking the Save Configuration icon on the toolbar. (See Toolbar on page 35.)
Save As	Saves the client configuration to a different file or even to a floppy.
Recent Files	Displays path of recently opened client files.
Exit	Closes AS-525AV ViTrax Client.

View

Select the items you want to see in AS-525AV ViTrax window through the view menu bar options such as toolbars frequently used and the preferred screen arrangement in the Viewing Pane.

System Overview

Toolbars

Choose to view or hide the following toolbars:

- **Standard** —contains most commonly used tasks and functions
- **Screen Arrangement** —manipulates the views and camera layouts to the own preference
- **Screen Control** —manages video streams and camera view choices in the Display Pane

Panes

Toggle between viewing and hiding the following panes in AS-525AV ViTrax window:

- **Structure** —the pane that is visible on the left side of AS-525AV ViTrax window. It is the control center of the system and is most useful when you are looking at cameras from multiple locations and multiple AS-525AV ViTrax servers (see Structure Pane on page 37).
- **Events** —the pane that is visible on the lower half of AS-525AV ViTrax window. It gives the important notifications such as when you are connecting to a server successfully, lets you know if you have input improper user names and passwords, and gives you error codes when needed.
- **PTZ Control** —controls the PTZ tasks if you have a PTZ compatible camera attached to the system.




Note:

PTZ capabilities are not supported in this version.

- **Video Adjustment** —the pane that contains tools to adjust every individual camera with its own settings (see Making Video Adjustments)

Status Bar

This bar displays general status information such as system readiness and layout sequence options.

Click the Manage Layout Sequences icon  to access the Manage Layout Sequence feature (see Creating Custom Layouts

Full Screen

In full screen, none of the panes are seen and the cameras expand to their maximum size to fill the full screen of the monitor.

Access this feature from the **View** menu, the F11 shortcut key on the keyboard, or by clicking on the Full Screen icon on the toolbar (see Toolbar on page 35).

Minimize full screen view by pressing the F11 shortcut key on the keyboard or by clicking Exit in the Full Screen dialog.



Figure 22: Full Screen Dialog

Always on Top

Enabling this feature prevents other application windows from opening on top of AS-252 ViTrax Client windows until you uncheck **Always on Top**.

Screen Arrangement

This feature allows you to manipulate the views and camera layouts to your own preference.

Equal Size Screens

This feature displays the screens in the Display Pane in a designated number of equal size screens.



Figure 23: Screen Arrangements

System Overview

Large Size Screens

This feature displays the screens in the Display Pane in a designated number of equal size screens with 1-2 large screens.



1 Large and 5 Smaller Screens



1 Large and 7 Smaller Screens



2 Large and 8 Screens



1 Large and 12 Smaller Screens

Figure 24: Large Screen Arrangements

Maintain Aspect Ratio

When enabled, this feature maintains the correct proportions of the images appearing in the Display Pane screens.

Screen Details

Select the details you want to appear on each of the screens in the Display View with the following preferences:

Show Screen Footer	Displays footer under each screen in the Display Pane. Access this task on the keyboard with shortcut key Alt+Shift+O .
Show Current Frame Time	Shows current frame time of the displayed image in the screen footer of selected screens. Access this task on the keyboard with shortcut key Alt+Shift+T .
Show Image Resolution	Shows the resolution of the displayed image in the screen footer of selected screens. Access this task on the keyboard with shortcut key Alt+Shift+R .

Show Average Image Size per Frame	<p>Shows the average image size per frame of the displayed image in the screen footer of selected screens.</p> <p>Access this task on the keyboard with shortcut key Alt+Shift+Z.</p>
Show Average Frame Rate per Second	<p>Shows the average frame rate per second (fps) of the displayed image in the screen footer of the selected screens.</p> <p>Access this task on the keyboard with shortcut key Alt+Shift+F.</p>
Digital Pan-Tilt-Zoom	<p>This feature does not work in this version.</p>
Show Detected Motion	<p>Shows motion detection of the displayed image in the selected screen.</p> <p>Access this task on the keyboard with shortcut key Alt+Shift+M.</p>
Hide Detected Motion for All Screens	<p>Hides motion detection in all displayed screens.</p>

Time Presentation

Choose between the following time preferences:

- Local Time
- UTC Time (Coordinated Universal Time)
- Server Local Time

Save Current Layout

The Layouts feature group cameras from different AS-525AV ViTrax servers/locations into groups for more efficient monitoring and better management. You can select this option to save the currently selected layout.

View and select the available layouts in the Structure Pane tree-view. The selected view displays in the Display Pane (see Creating Custom Layouts on page 90).

System Overview

Manage Layouts

This feature allows you to set the preferences on all the layouts.

Also access this option by clicking the Manage Layouts icon in the Structure Pane (see Creating Custom Layouts on page 90).

Deactivate Layout Sequences

This feature deactivates layout sequences.

Manage Layout Sequences...

When layouts are created, they can be used for creating video sequencing through the Manage Layout Sequences feature. This can be used to define which layout is activated upon startup.

Also access this feature by clicking the Manage Layout Sequence icon in the Structure Pane (see Creating Custom Layouts on page 90).

Manage Maps

This feature allows you to quickly and conveniently locate cameras for viewing placed on Google Map™ and/or on the own JPEG map (see Map Module Feature on page 94).

Server

Manage the servers by clicking on Server in the menu bar or by pressing the shortcut keys on the keyboard, when applicable.

Add Server

This menu option launches the Add Server Wizard (see Adding the Server to the Client on page 21).

Remove All Servers

This menu option removes all server connections.

Upon selection, the system asks you to confirm your choice to remove the server connection.

Selected Servers

Manage the servers with the following options in the submenu:

Connect	Connects to a selected server
Reconnect	Reconnects to a selected server
Disconnect	Disconnects from a selected server
Refresh	Updates the server connection
Tasks	<p>Manages and configure server and camera options with the following:</p> <ul style="list-style-type: none">• Server Security Setup Wizard• Manage Server Security• Camera Setup Wizard (see Configuring Cameras on page 52.)• Video Frame Export Setup Wizard (see Exporting Video Frames on page 84)• Open Archive (see Archiving Integrity Wizard on page 97)• Manage Watchdogs (see Server Configuration on page 39)• Recording Properties (see Server Configuration on page 39)• TCP Communication Properties (see Server Configuration on page 39)• Backup server's archive data (see Archiving Backup Wizard on page 99)• Find Arecont Vision Network Cameras (see Setting up AC-525 Connection on page 52.)• Find Network Cameras (see Network IP Cameras on page 68) <p>Refer to the AC-525 Hardware manual to see a list of compatible cameras.</p>
Move Up	Scrolls up if you have multiple servers
Move Down	Scrolls down if you have multiple servers
Remove	Removes server connection
Properties	Sets server preferences

Connect All Servers

This feature connects all servers on the system.

Access this feature on the keyboard with shortcut key **Ctrl+Shift+C**.

System Overview

Disconnect All Servers

This feature disconnects all servers from the system.

Access this feature on the keyboard with shortcut key **Ctrl+Shift+D**.

Manage Servers

Add, remove, configure, and connect or disconnect the servers with this feature.

Video

The video menu options manage the video properties of the images displayed in the Display Pane.

Stream

This feature enables you to pick which camera you want to view in the selected camera window.

Transfer

This feature sets the video transfer rate, bandwidth controlled broadcast time, motion control video transfer rate, and recompression properties (see Enabling Video Transfer on page 88).

Digital-Pan-Tilt-Zoom

This feature enables you to select, drag, and zoom in/out of the displayed PTZ camera image in Displayed View.



Note:

PTZ is currently not supported in this version.

Also access this feature from **Screen Details** in the **View** menu choice.

Show Detected Motion

This feature shows motion detection of the displayed image in the selected screen in the Display Pane.

Also access this feature from **Screen Details** in the **View** menu choice.

Properties

This feature shows camera properties of the screen selected in the Display Pane.

Maximize

This feature toggles between current Display Pane view and an enlarged view of a selected screen across the whole Display Pane area.

Copy Current Frame to Clipboard

This feature allows you to copy currently rendered video frame to Clipboard. Only the frame from a selected screen is copied.

Save Current Frame As...

This feature allows you to save currently rendered video frame to a file. Only the frame from a selected screen is saved.

Also access this feature by clicking the Save Current Frame As icon in the toolbar.

Unmap All Screens

This feature allows you to unmap the video stream from the Display Pane.

Also access this feature on the keyboard with shortcut key **Alt+Shift+U**.

Automap Available Screens

This feature allows you to automatically map the video stream to the available Display Pane. Also access this feature on the keyboard with shortcut key **Alt+Shift+A**.

Tools

The **Tools** menu options manage password access security, viewing files, and application options and preferences.

Lock Application

This feature locks the application until an exclusivity mode password is provided to unlock it.

When you click on **Lock Application**, you are prompted to define a non-empty exclusivity mode password.

Utilities:

This feature opens and plays selected media files. You navigate the Media File window by selecting the desired tool from **Navigation** in the menu bar or by clicking on VCR standard navigation icons in the Standard toolbar:

Options

This feature modifies settings for AS-525AV ViTrax such as screen options, screen mapping, exclusivity, and other options (see Setting System Options on page 77).

Help

The **Help** menu options provide options to help you accomplish tasks.

System Overview

Rosslare on the Web

This feature links you to the Rosslare website: www.Rosslaresecurity.com

Problem Report Wizard

This feature links you to a Problem Report wizard. The wizard prompts you from screen to screen. The final report is sent to a Rosslare service representative.

About ViTrax Client

This feature lists product information such as product version number, module version number, product activation key, website address, and email address.

3.4 Toolbar

The toolbar contains shortcuts to major menus and commands. Click on each icon to transition to the desired section.

Standard Toolbar



Open Configuration—This button on the toolbar allows you to open previous AS-525AV ViTrax configurations. It is most useful if you are exporting configurations from one machine to another.



Save Configuration —This button on the toolbar allows you to save any changes that you have just made to the AC-525.I It continues to save to the same file unless you click on File and Save As; then you can save to a different file or even to external memory, e.g. USB 2.0 memory key.



Structure Pane — This button toggles between seeing and not seeing the structure pane on the left side of AS-525AV ViTrax window.

Access this pane on the keyboard with shortcut key **Alt+Shift+S**.



Events—This button toggles the events window.

Access this pane on the keyboard with shortcut key **Alt+Shift+E**.



PTZ Control — This enables the Digital Pan-Tilt Zoom option. PTZ compatible cameras are currently not supported in this version of the software.



Video amplification— This button toggles the video amplification pane. When this button is pressed, a pane opens from which you can adjust the brightness, contrast, saturation, sharpness, and hue for any camera.



Full Screen — This button toggles full screen mode. In full screen, none of the panes are seen and the cameras expand to their maximum size to fill the full screen of the monitor.



Open Archive — This button opens the archive viewer window. You can view archived data of the connected server.



Manage Maps — This button toggles map module window for managing and viewing cameras on Google or previously added maps.



Save Current Frame as — This button allows you to save currently rendered video frame into file. Only the frame from a selected screen is saved.



Wizards — The wizards icon on the toolbar gives you a shortcut to various server, camera options, and configurations. You can also access these features through the right-click menus in the software.

Screen Arrangement Toolbar



Views — These buttons (shown above) on the toolbar allow you to manipulate the views and camera layouts to your own preference.

Screen Control Toolbar



Screen Footer — This button allows you to display a variety of information beneath each camera window. It can display frame rate, time, picture quality, recording, motion detection, and image size. The screen footer is the text below each camera.



Stream Selection — This button allows you to pick which camera you want to view in the selected camera window. This can also be done through the right-click menus and by dragging the desired camera from the structure pane to the desired display window, or by right-clicking on any camera window and selecting Stream.



Show Motion — This button toggles between showing the motion outlined on the selected camera screen or not.

Motion detection must be set up before this feature can be activated.

System Overview



Maximize — When pressed, this button puts the selected camera into a single view. If pressed again it returns to the previous view. This can also be accomplished by double clicking on the camera of choice.

3.5 Structure Pane

The structure pane is the control center of the ViTrax AS-525. You set up the AC-525, the cameras, and all third party servers in the structure pane. In the structure pane it is also possible for you to manage many servers from one window by right-clicking on the server of the choice.

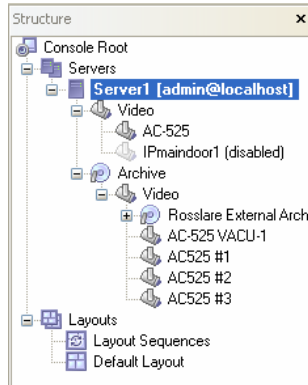


Figure 25: Structure Pane

Console Root

Right-click to see the following options:

- Standard Toolbar
- Screen Arrangement Toolbar
- Screen Control Toolbar
- Structure Pane (toggles between viewing and hiding pane)
- Events Pane (toggles between viewing and hiding pane)
- Video Adjustment Pane (toggles between viewing and hiding pane)
- Status Bar

Servers

Right-click to view the following options:

- Add Server (see Adding the Server to the Client on page 21)
- Remove All Servers

Available servers sub-menu

- Connect All Servers
- Disconnect All Servers
- Sort Servers Alphabetically
- Manage Servers

Right-click on the server name to view the following options:

- Connect
- Reconnect
- Disconnect
- Refresh
- Tasks: Remove, Move Up, Move Down, Properties

Archive – Right-click to open Archive

Layouts

(See Creating Custom Layouts on page 90)

Right-click to view the following options:

- Save Current Layout
- Manage Layouts
- Deactivate Active Layout Sequence
- Manage Layout Sequences

Display Pane

The display pane shows all items within the structure pane selected element.

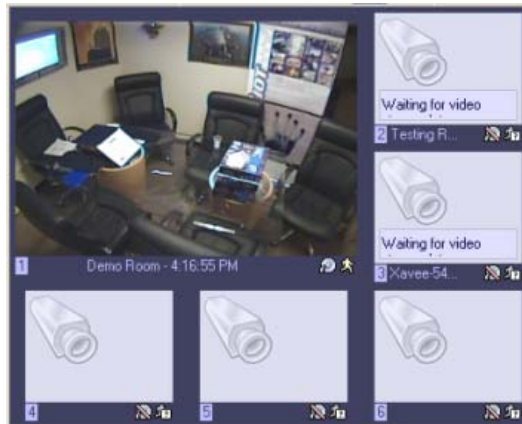


Figure 26: Display Pane

Right-click on any of the displayed views to enable features such as:

System Overview

- Video Stream
- Video Transfer
- Digital Pan-Tilt-Zoom



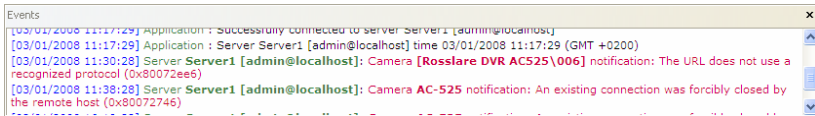
Note:

The feature of the Digital Pan-Tilt Zoom is used by PTZ, which is not applicable in this version.

- Show Detected Motion
- Copy Current Frame to Clipboard
- Save Current Frame As ...
- Open Archive ...
- Screen Arrangement
- Maintain Aspect Ratio

Events Pane

In this pane you can view a time and date record of server-client connection.



3.6 Server Configuration

Now that you are a little more familiar with the software's main window, you are ready to configure the server.

In this section you learn how to check and modify:

- Recording Properties
- Server Communication Properties
- Server Watchdog
- Server User Management

Recording Properties

View and modify the hard drive space used by AS-525AV ViTrax software.

To display recording properties:

1. From the structure pane, right-click the server name.
2. Select **Tasks** → **Recording Properties**. The Recording Properties dialog box opens.

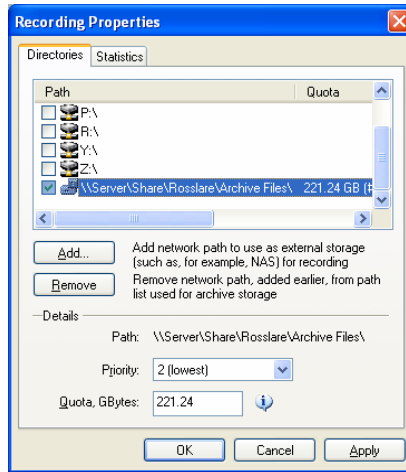


Figure 27: Recording Properties Dialog Box – Directories Tab

The **Directories** tab displays the available hard drive space and allows you to make modifications:

- Path** When you check and highlight either drive, the **Details** option below becomes available for further data entry. If you do not want the C drive to be used for storage, do not check it. If you only want a small portion of the C drive to be used, define how much in the **Details** option.
- Add** This button allows you to add external storage addresses for recording such as sharing on the remote computer or NAS drive.
- Remove** This button removes currently selected network storage path.
- Path** Displays selected path.
- Priority** This option allows you choose which of the drives records first.

You must first check and then highlight (by clicking one time) the drive you want to customize in this portion.
- Quota** This option allows you to select the amount of space you would like to designate for storage on that particular hard drive.

Never choose 100% for the C drive. This may cause your machine to eventually crash due to not enough available virtual memory.

System Overview

The Recording Properties dialog box remains open behind the new dialog box.

3. Click **Apply** to save the settings.
4. Click the **Statistics** tab, which displays the used space and available space left on the hard drives being used by AS-525AV ViTrax software.

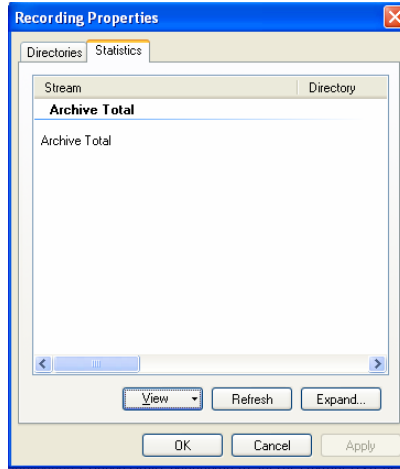


Figure 28: Statistics Tab

5. Click **View** to enable Stored Streams by Source or Stored Streams by Location.
6. Click **Refresh** at any time for an updated list.
7. Click **Expand** to view the Archive Total on a larger screen.
8. Click **OK** to save the settings and return to the Recording Properties dialog box.

Server Communication Properties

View and modify who is connected to the server.

To open the server communication properties box:

1. From the structure pane, right-click on the server name.
2. Select **Tasks → TCP Communication Properties**. The TCP Communication Properties dialog box opens.

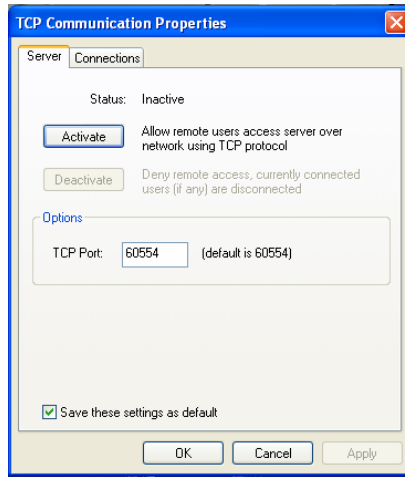


Figure 29: TCP Communication Properties

- Click the **Server** tab to display the server status.

Activate	This button allows remote users access server over network using TCP protocol
Deactivate	This button denies remote access to currently connected users
TCP Port	Default is 60554
Save these settings as default	Check if you want the new settings to be the default settings

- Click **Apply** to save the settings.
- Click the **Connections** tab to display who is connected to your server. The IP address, user name, and connection time can all be seen.

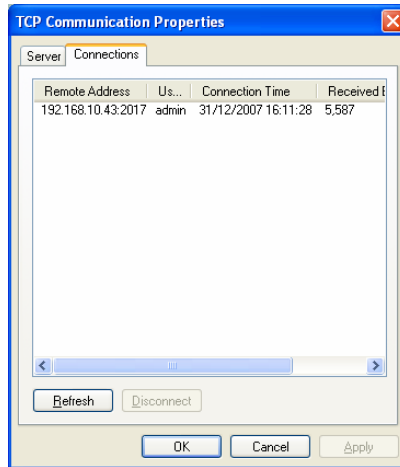


Figure 30: Connections Tab

Click **Refresh** at any time for an updated list.

6. Click **OK** to save the settings and to close the window.

Server Watchdog

The server watchdog performs an important operation, protecting the software from improperly working due to system problems. Configuring the watchdog is not necessary if you chose to enable it during installation. However, if you are having frequent restarts or for maintenance adjusting, you may choose to manually configure the watchdog.

To configure the watchdog:

1. From the structure pane, right-click on the server.
2. Select **Tasks → Manage Watchdog**. The Manage Watchdog dialog box opens.

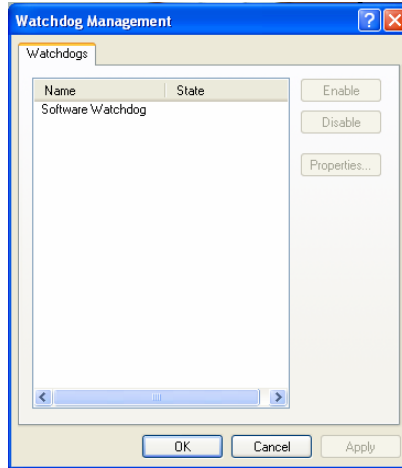


Figure 31: Manage Watchdog Window

3. Highlight Software Watchdog by left clicking one time to activate the **Enable**, **Disable**, and **Properties** buttons.
4. Click **Properties**. The Software Watchdog Properties dialog box opens.

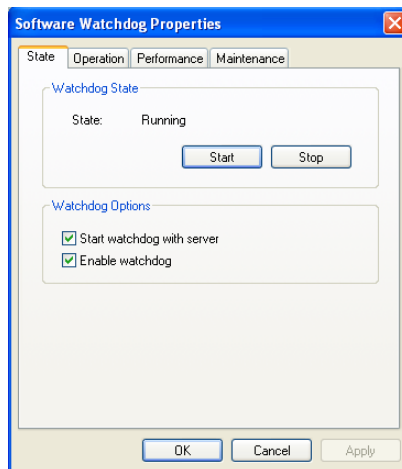


Figure 32: Software Watchdog Properties Window – State Tab

5. Click the **State** tab to stop or start running the watchdog.
6. Under the **Watchdog Options**, you have the options to start the watchdog with server and to enable the watchdog by checking the checkboxes.

System Overview

7. Click **Apply** to save the settings.
8. Click the **Operation** tab to configure the reboot action.

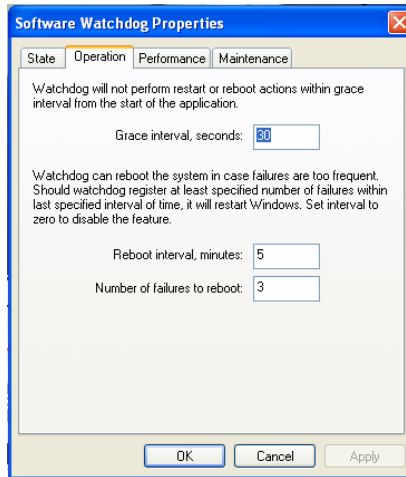


Figure 33: Operation Tab

9. In the Operation tab, type the amount of time in seconds for the grace interval, the amount of time for the reboot interval, and the number of failures before the device reboots.
10. Click **Apply** to save the settings.
11. Click the **Performance** tab to configure which environment performance counters and variables determine the necessity of a server or system restart.

The watchdog attempts to restart the server or system after exceeding any specified threshold.

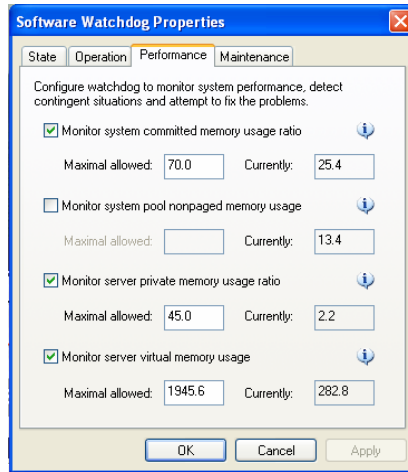


Figure 34: Performance Tab

In the **Performance** tab, you select the following options by checking them:

- Monitor system committed memory usage ratio
 - Monitor system pool non-paged memory usage
 - Monitor server private memory usage ratio
 - Monitor server virtual memory usage
12. Click **Apply** to save the settings.
 13. Click the **Maintenance** tab to set the restart.

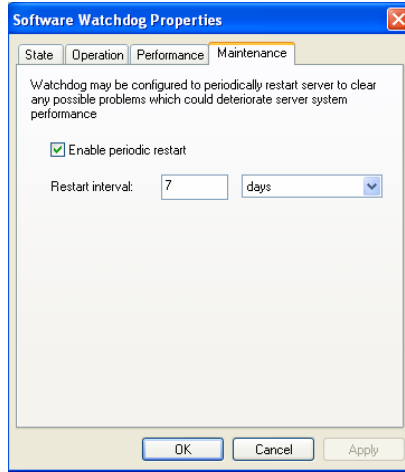


Figure 35: Maintenance Tab

It is recommended you check the **Enable periodic restart** checkbox. Enabling this feature restarts the Server application at times specified.

14. Click **OK** to save the settings and to close the window.



Note:

It is recommended to restart the Server Application to refresh system resources. The watchdog server restart goes virtually unnoticed by the user.

Server User Management

Manage the server user permissions through the Server Security Wizard. This wizard guides you step-by-step to add, remove, or modify user permissions.

To access the server security wizard:

1. From the structure pane, right-click on the server.
2. Select **Tasks → Server Security Setup Wizard**. The Server Security Setup Wizard dialog box opens.

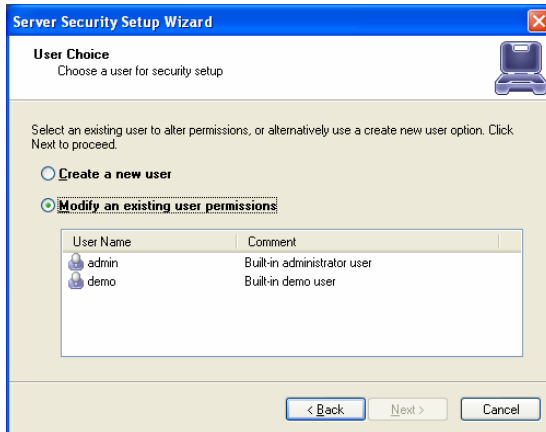


Figure 36: Server Security Setup Wizard

3. Click **Create a new user** to create a new user.
4. Click **Modify an existing user permissions** to modify an existing user permission.
5. Click **Next** to continue the setup. Make sure to be on the user you want to use when you proceed.

The User Details window opens.

Figure 37: User Details Window

6. The **User login name (case sensitive)** should display the user for this setup wizard. Write a **User password (Case sensitive)** and rewrite it under

System Overview

Password confirmation. You have the option to add comments or an E-mail address of the user before continuing.

7. Click **Next** to proceed with the setup wizard. The System Permission window opens.

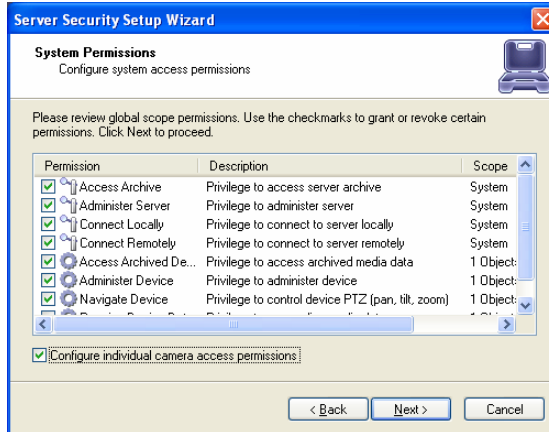


Figure 38: System Permissions Window

8. Server administrators can grant or revoke certain permissions on a camera-by-camera basis by checking the **Configure individual camera access permissions** checkbox.
9. Click **Next** to proceed to the next screen. The Device Permissions window opens.



Note:

The following window, the **Device Permissions** window, only appears if you check the Configure individual camera access permissions checkbox. Otherwise, it skips to the **Action Summary** window.

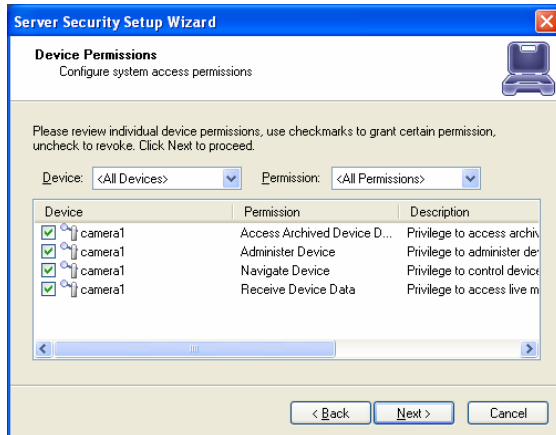


Figure 39: Device Permissions Window

10. After reviewing the device permissions list, check the devices in order to grant permission and uncheck the devices in order to revoke permission.
11. Click **Next** to proceed to the next screen. The Action Summary window opens.

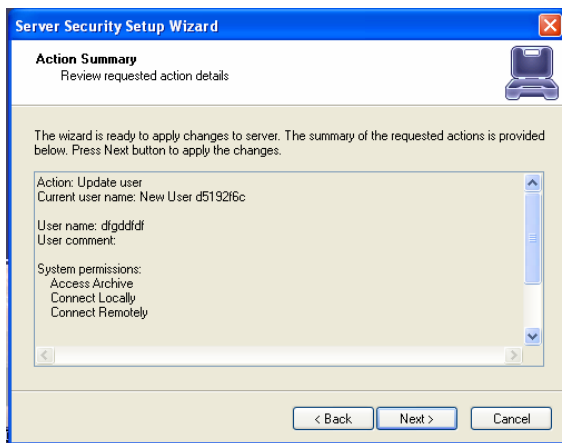


Figure 40: Action Summary Window

12. This window allows you to review the requested action details before you finish the setup wizard. Click **Next** to continue.

**Note:**

After you click Next in this window, you can no longer click Back in the setup wizard. Be certain when you review the Action Summary that it is all correct.

13. Click **Finish** to close the wizard or check **Continue with setting up other permissions** to continue this setup wizard for a different user.

4. Configuring Cameras

You are now ready to set up the cameras. AS-525AV ViTrax supports the AC-525 connection (in which you can connect your cameras), Arecont® network IP cameras, and network (IP) cameras (web cameras).

This chapter explains how to set up the cameras and how to configure each camera via the ViTrax Camera Setup Wizard in order to record video from this camera and for motion detection. The panel in the ViTrax software supports two cameras. The system can support up to five panels.

The Camera Setup wizard helps you assign names for each camera, adjust the cameras properties (like frame size, etc), select the compression type, and setup motion detector and recording settings.

AS-525AV ViTrax is compatible with the following cameras:

- AC-525 connection
- Arecont® network IP cameras
- Network IP cameras (web cameras)



Note:

Refer to the AC-525 Hardware manual to see a list of recommended, compatible cameras and for instructions on the installation process of the AC-525.

4.1 Setting up AC-525 Connection

You are now ready to configure the AC-525 to work with AS-525AV ViTrax. Each panel supports two cameras. The system can support up to five panels.

Configuring through the Camera Setup Wizard

This section explains how to configure each AC-525 to enable video recording and for motion detection.

To configure the AC-525:

1. From the structure pane, right-click on the server.
2. Select **Tasks → Camera Setup Wizard**. The Camera Setup Wizard dialog box opens.

Configuring Cameras

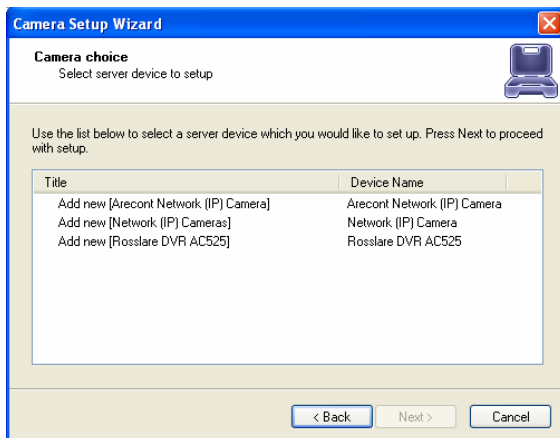


Figure 41: Camera Setup Wizard Window

3. From the first window in the wizard select **Add new (Rosslare DVR AC525)**.
4. Click **Next** to continue to the next screen. The Camera device properties window opens.

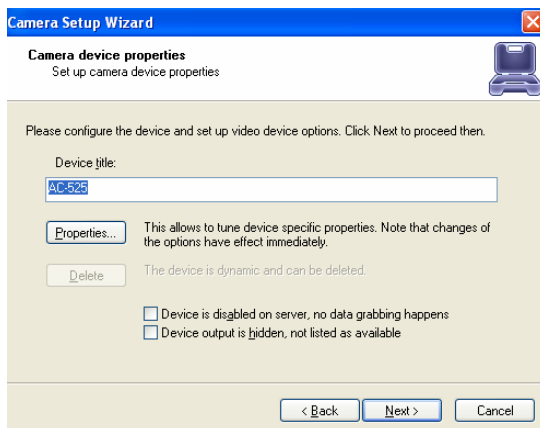


Figure 42: Camera Device Properties Window

5. In **Device Title**, type the name of device you are adding.
6. Click **Properties** to set device specific properties.
7. Click the **Location** tab to enter the Network host name or IP address.

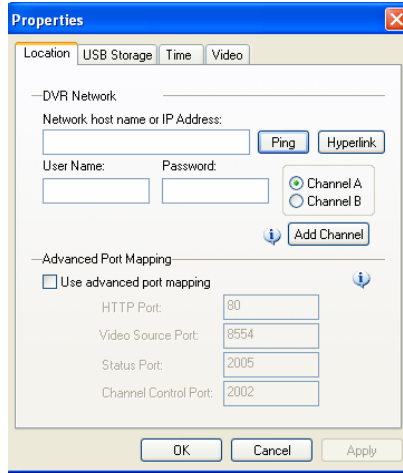


Figure 43: Location Tab

8. Click **Ping** to ping the AC-525 to the selected IP Address.
9. Select Channel A or Channel B.
10. Click **Apply** to save the settings.
11. Click the **USB Storage** tab to check the available USB storage.

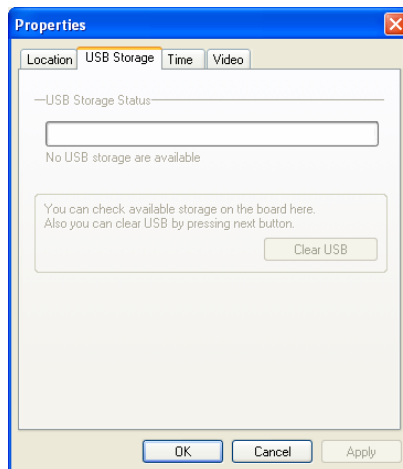


Figure 44: USB Storage Tab

12. Click **Apply** to save the settings.
13. Click the **Time** tab to set the panel's time and date.

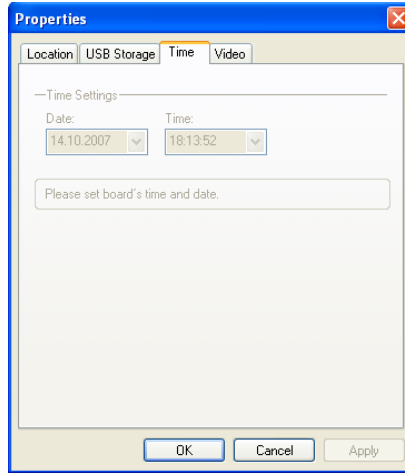


Figure 45: Time Tab

14. Click **Apply** to save the settings.
15. Click the **Video** tab to set video resolution, video stream, frame rate, and bit rate and to set whether the video streaming comes from Camera A or Camera B.

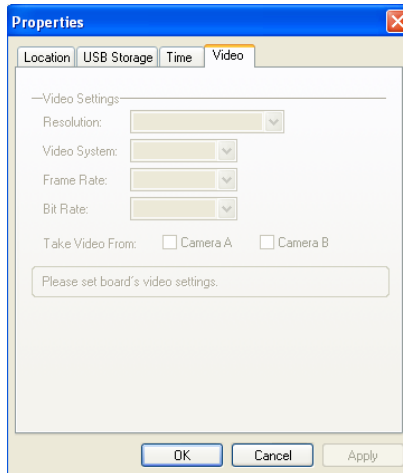


Figure 46: Video Tab

16. Click **OK** to save the settings and return to the Camera device properties box.

17. Click **Next** to continue with the Camera Setup Wizard. The Video compression window opens.

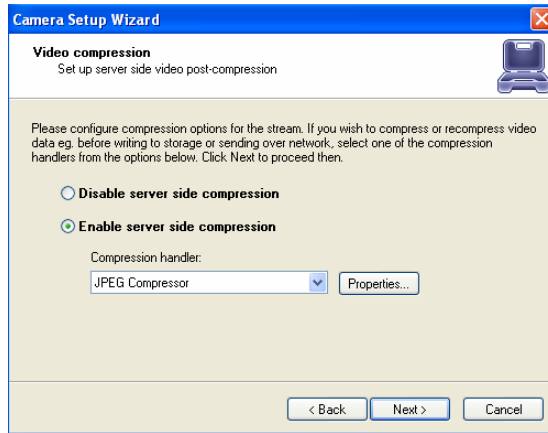


Figure 47: Video Compression Window

This option allows you to compress video data. Disable or enable server side compression.

After selecting a Compression handler from the dropdown menu, click **Properties**. The JPEG Compressor Properties window opens.

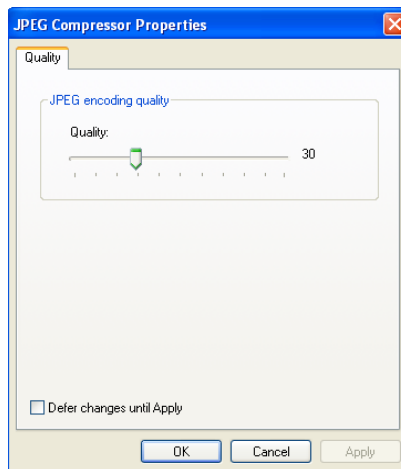


Figure 48: JPEG Compressor Properties

18. Drag the handle on the Quality slider either left or right to adjust the quality of the JPEG compression.

Configuring Cameras

Click **OK** to return to the Video compression window.

19. Click **Next**. The Motion analysis window opens.

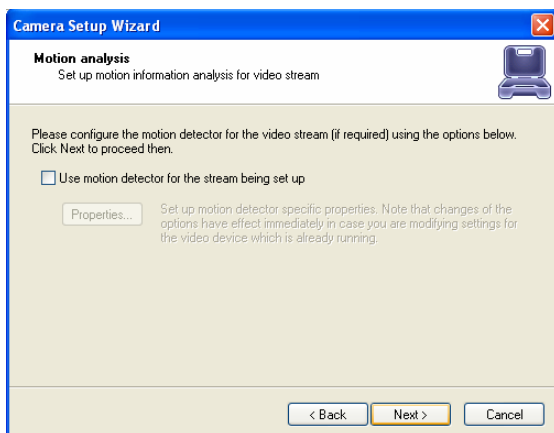


Figure 49: Motion Analysis Window

If motion analysis is required, check **Use motion detector for stream being set up**.

Then click **Properties** to make the desired settings. The Properties window opens.

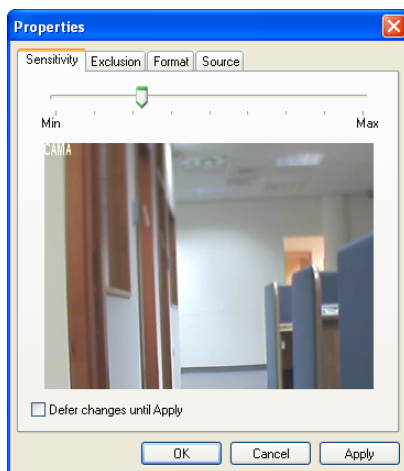


Figure 50: Sensitivity Tab

20. Click the **Sensitivity** tab to adjust the motion detection sensitivity.

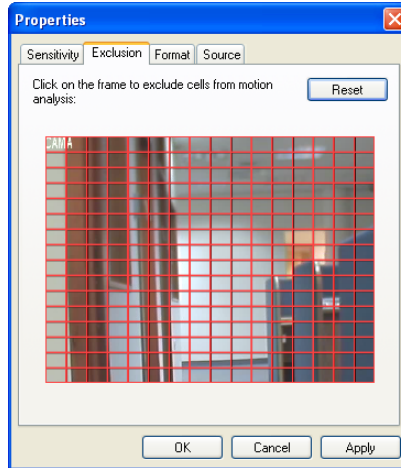


Figure 51: Exclusion Tab

21. Click the **Exclusion** tab and select which cells you want excluded from motion detection.

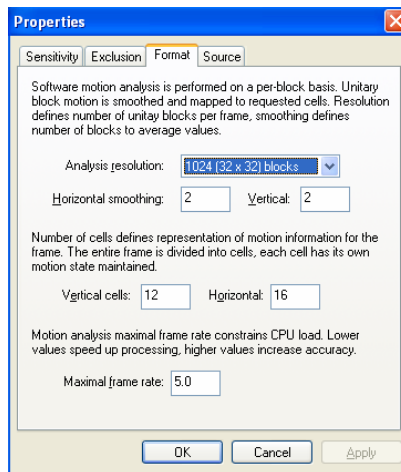


Figure 52: Format Tab

22. Click the **Format** tab to select desired resolution, motion smoothing, and motion in each cell of a frame.

Configuring Cameras



Note:

The higher the motion detection frame rate, the slower the CPU processing.

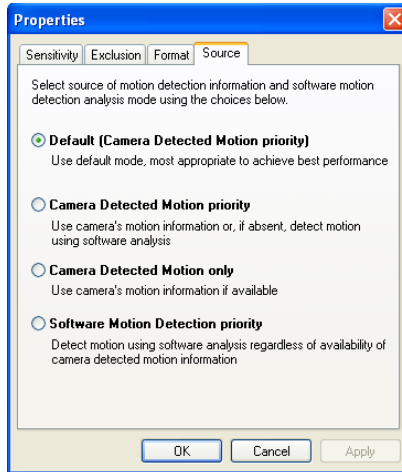


Figure 53: Source Tab

23. Click the **Source** tab to select the source of motion detection information and software motion detection analysis.
Click **OK** to save the settings and return to the Motion analysis window.
24. Click **Next**. The Data recording window opens.

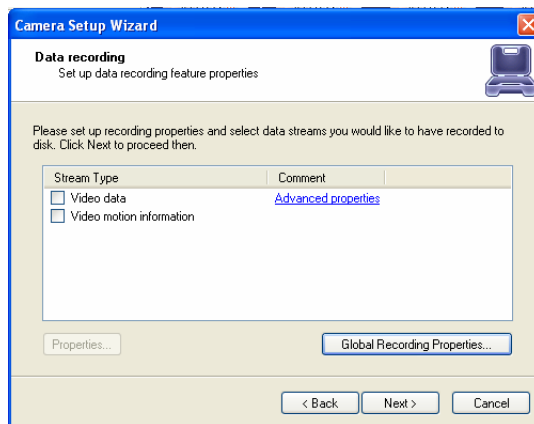


Figure 54: Data Recording Window

This screen allows you to set up data recording properties.

Check **Video data** and click **Advanced properties**.

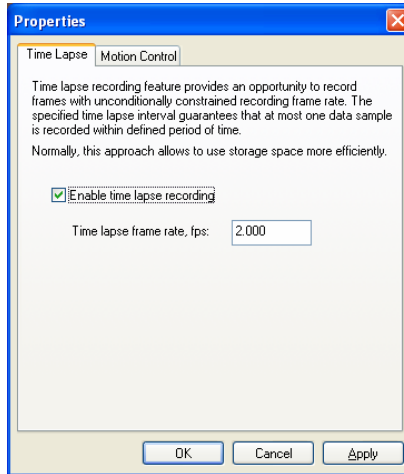


Figure 55: Time Lapse Tab

25. Click the **Time Lapse** tab. Check **Enable time lapse recording** if you want to record frames with unconditionally restrained recording frame rate. Enter the desired frame rate per second (fps).

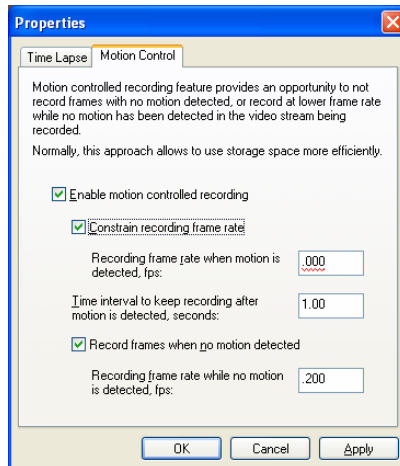


Figure 56: Motion Control Tab

26. Click the **Motion Control** tab to not record frames with no motion detected. Check **Enable motion controlled recording** and enter the desired settings.

Configuring Cameras

Click **OK** to save the settings and return to the Data recording window.

27. Click **Global Recording Properties...** button.

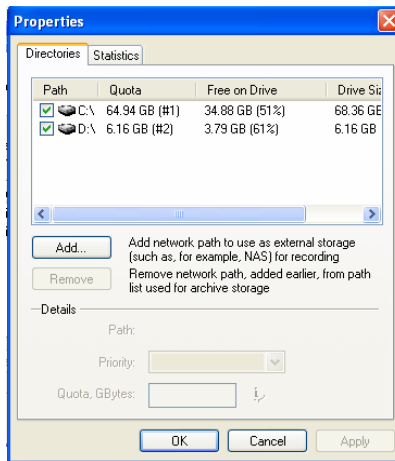


Figure 57: Directories Tab

28. Click the **Directories** tab to select the desired network path to use as external storage.

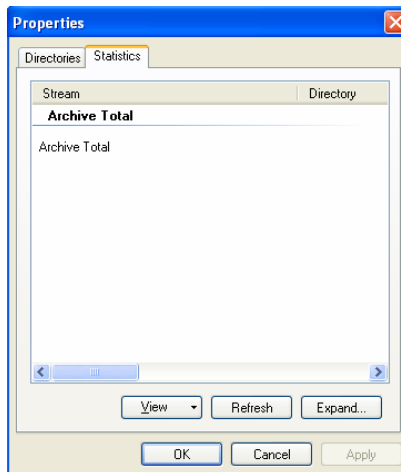


Figure 58: Statistics Tab

29. Click the **Statistics** tab to view the archive total.
- Click **View** to select viewing the stored streams by source or location.
- Click **Refresh** to refresh the screen.

Click **Expand** to maximize the size of the window.

Click **OK** to save the settings and return to the Data recording window.

30. Click **Next**. The Action summary window opens.

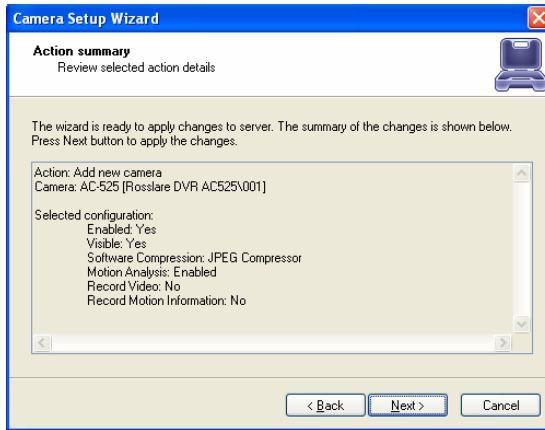


Figure 59: Action Summary Window

This screen displays the selected settings. This is the last opportunity to change the settings.

Click **Back** to change the settings.

31. Click **Next** to complete the Camera Setup Wizard.
32. When the Wizard Completion window opens, click **Cancel** to exit the Camera Setup Wizard if you do not want to preserve any of the settings

- Or -

Click **Finish** to exit the Camera Setup Wizard or check **Continue with setting up another camera** to continue this setup wizard for a different camera.

4.2 Setting up Arecont® Network IP Cameras

There are two ways to set up an Arecont® Network IP camera to work with AS-525AV ViTrax:

- Let the software find the cameras automatically
- Manually input all of the camera's IP information

Configure the Arecont® Network IP Cameras Automatically

Configure the Arecont® Network IP camera conveniently and reliably through the **Find Arecont® Vision Network Cameras** function.

Configuring Cameras

To configure the IP camera automatically:

1. From the structure pane, right-click on the server.
2. Select **Tasks → Find Arecont® Vision Network Cameras**. The Find Arecont Vision Network Camera dialog box opens.

Configure the IP Cameras Manually

Configure the Arecont® IP cameras manually through the Camera Setup wizard.

To configure the IP camera manually:

1. From the structure pane, right-click on the server.
2. Select **Tasks → Camera Setup Wizard**. The Camera Setup Wizard dialog box opens.

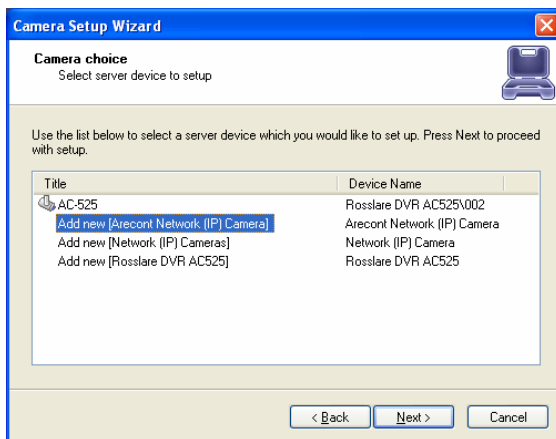


Figure 60: Camera Setup Wizard



Note:

The Camera Choice screen shows all of the configured devices and also has the option to add new devices.

3. Highlight **Add new (Arecont® Network (IP) Camera)**.
4. Click **Next** to continue adding the camera. The **Camera device properties** window opens.

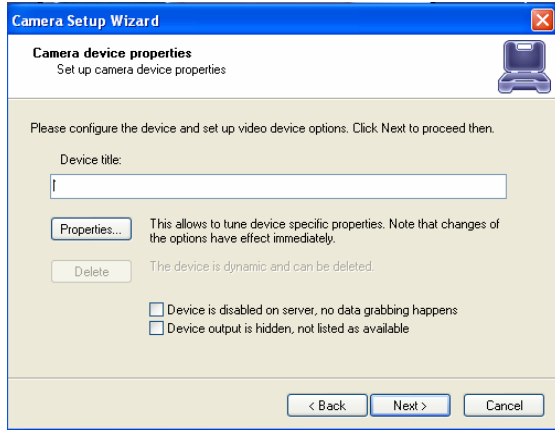


Figure 61: Camera Device Properties Window

5. Give the device a name under **Device title**.
6. Click on the **Properties** button. The **Properties** window opens.

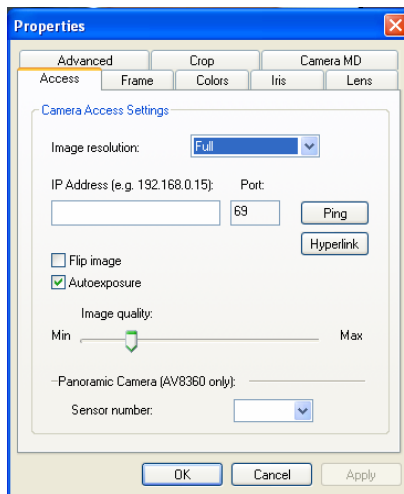


Figure 62: Properties Window – Access Tab

7. Click the **Access** tab to set camera access settings such as image resolution, IP address, port, and image quality.
Click **Apply** to save the settings.

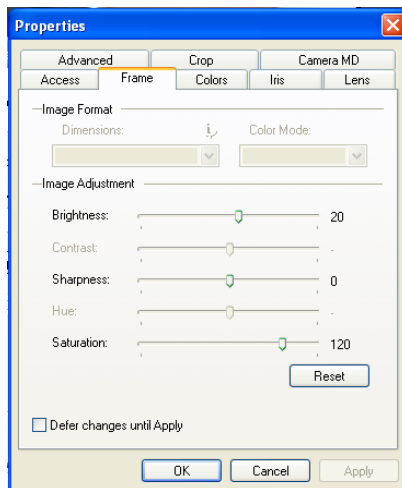


Figure 63: Frame Tab

- Click the **Frame** tab to set the image dimensions, color mode, image brightness, contrast, sharpness, hue, and saturation.

Click **Apply** to save the settings.

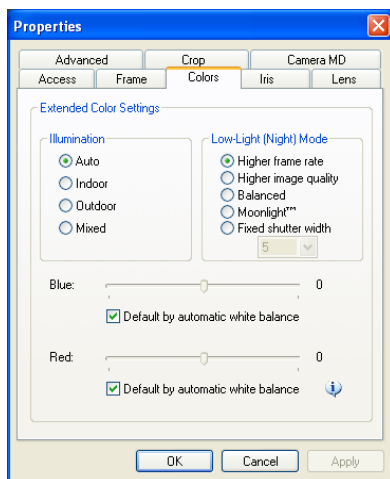


Figure 64: Colors Tab

- Click the **Colors** tab to set color settings such as illumination and night mode.

Click **Apply** to save the settings.

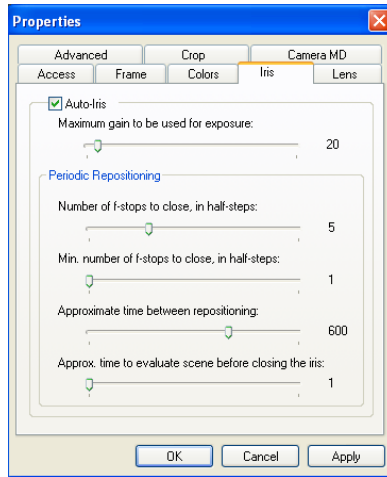


Figure 65: Iris Tab

10. Click the **Iris** tab to set iris preferences such as repositioning time. You must check the Auto-Iris checkbox or otherwise everything in this dialog box remains grayed out.

Click **Apply** to save the settings.

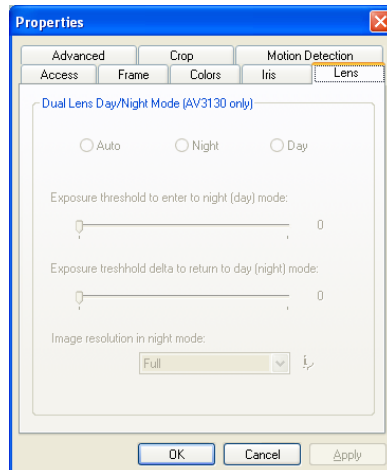


Figure 66: Lens Tabs

11. Click the **Lens** tab to set lens preferences such as auto mode, night mode, day mode, and full or half image resolution in night mode.

Click **Apply** to save the settings.

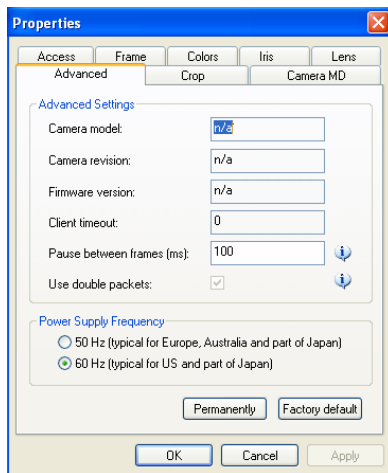


Figure 67: Advanced Tab

12. Click the **Advanced** tab to set advanced preferences such as the camera model, camera revision, firmware version, client timeout, number of pauses between frames, use of double packets, and the power supply frequency.

Click **Apply** to save the settings.

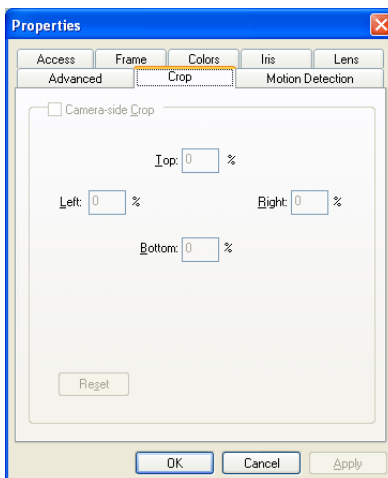


Figure 68: Crop Tab

13. Click the **Crop** tab to set image crop preferences.
14. Click **Apply** to save the settings.

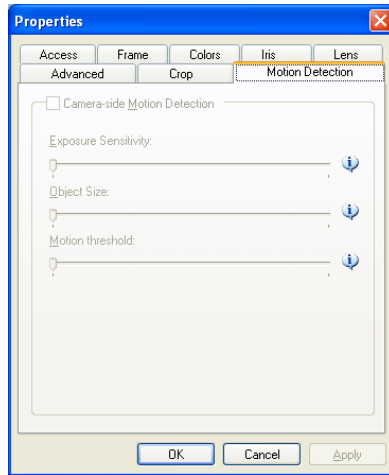


Figure 69: Motion Detection Tab

15. Click the **Motion Detection** tab. Check the Camera-side Motion Detection.
16. Click **OK** to save the settings and to close the Properties dialog box. The Camera Setup Wizard continues when the Properties dialog box closes.

4.3 Network IP Cameras

A network IP camera is a digital camera that can be directly connected to the Internet through a CAT5 or WiFi connection.

Network (IP) camera installations are highly scaleable and upgradeable. There is no need to buy and install additional video capture boards for the AC-525 system in the event you want to add a camera or increase performance of the system. There are two ways of setting up a network IP camera to work with the AS 525 ViTrax:

- Let the software find the cameras automatically
- Manually input all of the camera's IP information

Configure the IP Cameras Automatically

By following the step-by-step Network Scan Wizard, configuring the IP camera automatically is the most reliable and convenient way to configure the IP camera.

To configure the IP camera automatically:

1. From the structure pane, right-click on the server.

Configuring Cameras

2. Select **Tasks** → **Find Network Cameras**. The Network Scan Wizard dialog box opens.

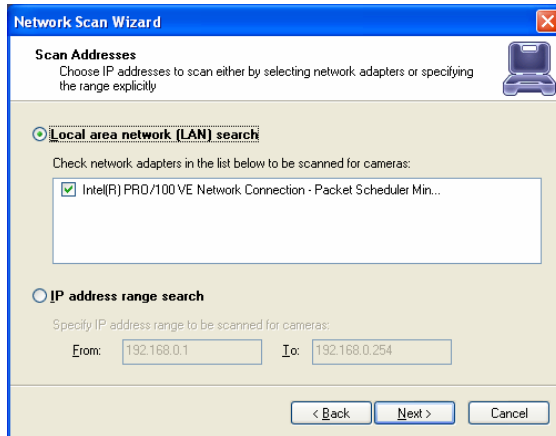


Figure 70: Network Scan Wizard

3. Select **Local Area Network (LAN) search** and check **Intelligent Camera Search**.

If you have chosen **Local Area network (LAN) search** choose network adapters for searching their networks

- Or -

If you know the networks IP range, search by the **IP address range search** option for the cameras.

4. Click **Next** to continue setting up the IP camera. The Scan Options window opens.

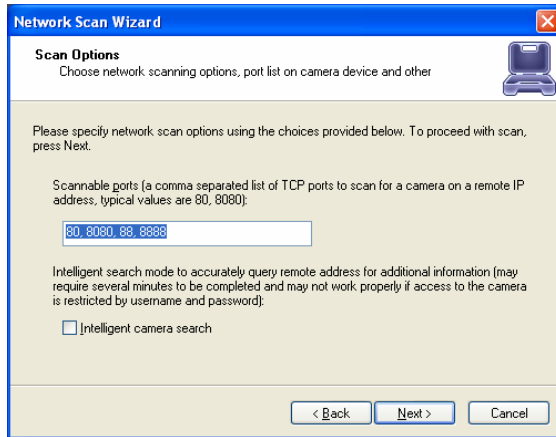


Figure 71: Scan Options Window

5. Check the **Intelligent camera search** checkbox if you want a more thorough network search. Then click **Next** to begin the network scan.



Note:

Intelligent camera search may take several minutes to be completed and may not work properly if access to the camera is restricted by username and password.

AS-525AV ViTrax now begins to scan the network and specified ports for any IP cameras. Once it is finished it gives you a list of the cameras that it found and the option to add them to AS-525AV ViTrax system.

Configure the IP Cameras Manually

Through the Camera Setup wizard, you can add and configure the IP cameras manually.

To configure the IP camera manually:

1. From the structure pane, right-click on the server.
2. Select **Tasks** → **Camera Setup Wizard**. The Camera Setup Wizard dialog box opens.

Configuring Cameras

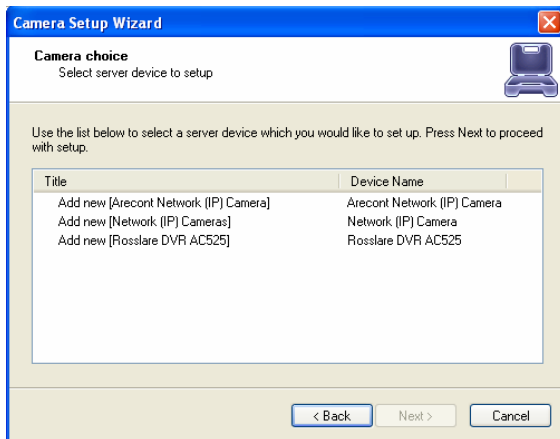


Figure 72: Camera Setup Wizard Window

3. From the first window in the wizard select **Add new Network (IP) Camera**.
4. Click **Next** to continue to the next screen. The Camera device properties screen opens.

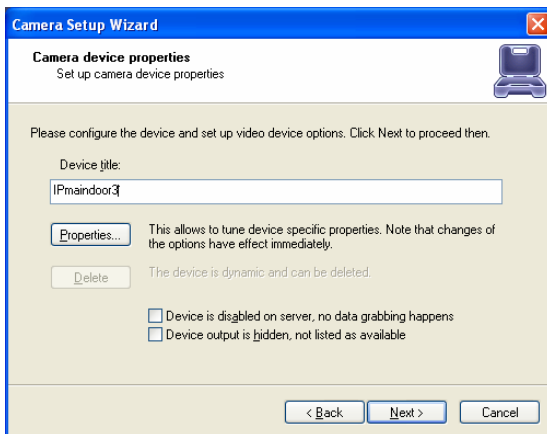


Figure 73: Camera Setup Wizard

5. In **Device Title**, type the name of the camera you are adding.
6. Click **Properties** to set device specific properties.

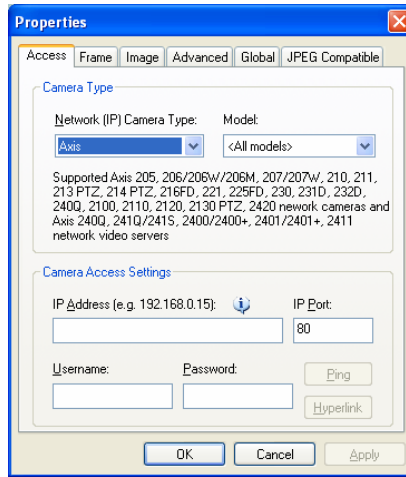


Figure 74: Device Properties

7. Click the **Access** tab to access the available cameras.

Select the camera type that you are using from the drop-down menu in **Network (IP) Camera Type** and specify the model (not necessary).

- Or -

If you are using an IP server, select from the same menu. Then select the camera input from the **Advanced** tab.

In **IP Address**, type the IP address of the IP camera and type in your username and password.

8. Click **Apply** to save your settings.

Configuring Cameras

- Click the **Frame** tab to define the quality of the picture.

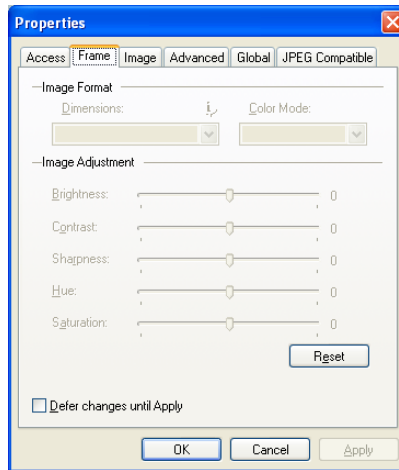


Figure 75: Frame Tab

In **Dimensions**, select the format you want. The higher quality chosen, the more space it takes.

In **Color Mode**, choose to see the images in color or black and white.

Under **Image Adjustment**, **Brightness**, **Contrast**, **Sharpness**, **Hue**, and **Saturation** options change the appearance of the video quality.

- Click **Apply** to save your settings.

11. Click the **Image** tab to set the image properties.



Figure 76: Image Tab

Operation mode	<ul style="list-style-type: none">• M-JPEG(stream)• JPEG
Image quality	From Min to Max
Flip image	Autodetect, No flip, Flip, Rotate 90 degrees, Rotate 270 degrees

12. Click Apply to save your settings.



Note:

Min quality gives higher image compression ration and higher FPS rates.

If the **Default quality** checkbox is checked, you cannot adjust the Image quality.

Configuring Cameras

- Click the **Advanced** tab to set the camera parameters and video server.

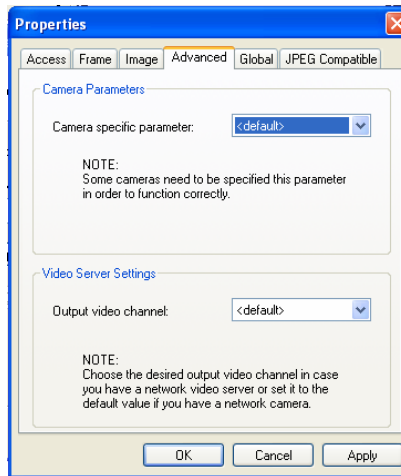


Figure 77: Advanced Tab

Camera specific parameter	<default>, Axis old firmware, Axis NTSC format, Axis PAL format
Output video channel	<default>, 1, 2, 3, 4, 5, 6, 7, 8

- Click **Apply** to save your settings.
- Click the **Global** tab to set global settings for all network cameras such as connection timeout, amount of time between frames, and specific proxy settings.

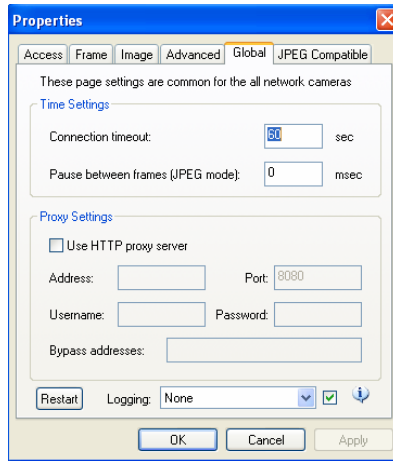


Figure 78: Global Tab

16. Click **Apply** to save your settings.
17. Click the **JPEG Compatible** tab to make the image JPEG compatible.

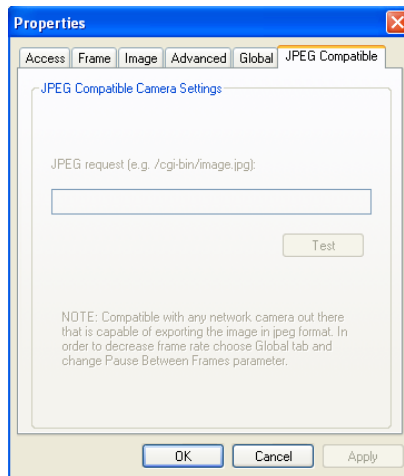


Figure 79: JPEG Compatible Tab

18. Click **OK** save your settings and to continue with the Camera Setup Wizard.

5. Setting System Options

You can modify the system's options for AS-525AV ViTrax such as the screen options, screen mapping, miscellaneous, exclusivity, and sound options.

To set system options:

1. From the **File** menu bar, click **Tools → Options**. The Options window opens.

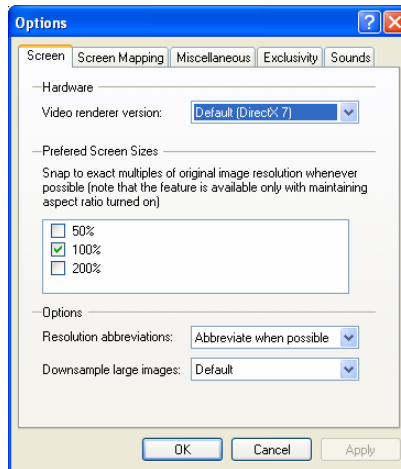


Figure 80: Screen Tab

Screen Tab

With the **Screen** tab selected, select the following screen options:

Video renderer version

- Default (DirectX 7)
- DirectX 9
- DirectX7
- Legacy DirectX
- GDI

Preferred Screen Size

50%, 100%, 200%

Resolution abbreviations

- Abbreviate when possible
- Don't abbreviate

Downsample large images

- Default
- Disabled

- Enabled, Favor Quality
- Enabled, Favor Speed

2. Click the **Screen Mapping** tab to define camera to screen mapping.

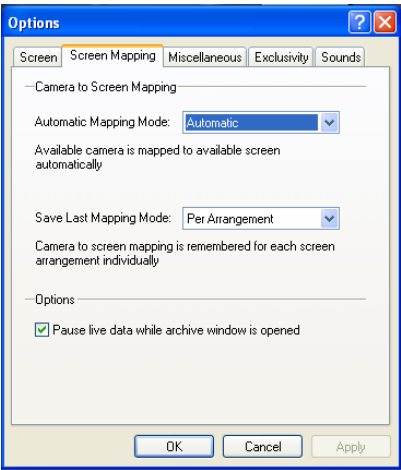


Figure 81: Screen Mapping Tab

Screen Mapping Tab

With the **Screen Mapping** tab selected, select the following screen options:

- | | |
|---|---|
| Automatic Mapping mode | <ul style="list-style-type: none">• Automatic – camera is mapped to screen automatically• Disabled |
| Save Last Mapping Mode | <ul style="list-style-type: none">• Per Arrangement• Automatic• Disabled |
| Pause live data while archive window is opened | It is recommended you check this option |

3. Click the **Miscellaneous** tab to set application options and structure pane options.

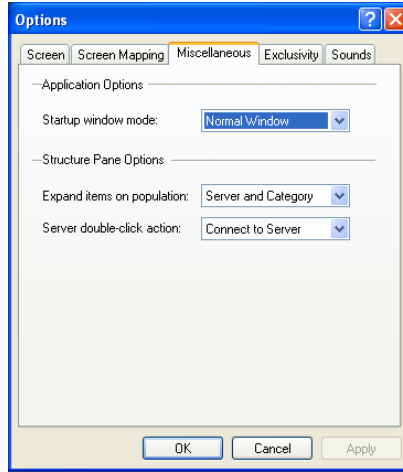


Figure 82: Miscellaneous Tab

Miscellaneous Tab

With the **Miscellaneous** tab selected, select the following screen options:

Startup window mode

- Normal Window
- Always Full Screen

Expand items on population

- None
- Server
- Server and Category

Server double-click action

- Connect to Server
- Show Properties

4. Click the **Exclusivity** tab to set exclusivity rights, passwords, and startup options.

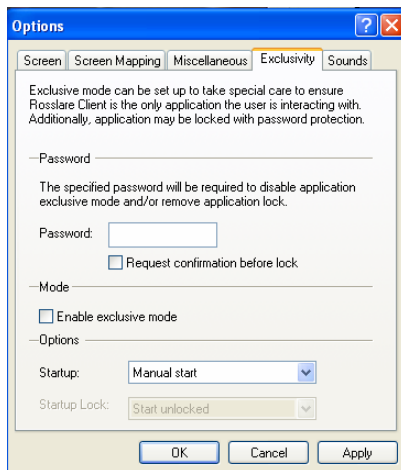


Figure 83: Exclusivity Tab

AS-525AV ViTrax includes safety features that prevent human error by allowing access to AS-525AV ViTrax. These features include:

- Exclusivity Mode (Windows lock out feature)
- Lock Application

Exclusivity Tab

With the **Exclusivity** tab selected, select the following screen options:

Password

- Type in any password
- Check whether you want to **Request confirmation before lock**.
- As you type in the password, **the Startup Lock** will not be grayed out.

Enable exclusive mode

By enabling the exclusive mode, you can only use the computer for surveillance purposes and cannot use the internet or other programs.

Startup

- Manual start
- Automatic with any user logon
- Automatic with current user logon

Startup Lock

- Start unlocked
- Start locked

Setting System Options

The exclusivity mode is a safety feature that prevents the user from having access to Windows operating system. Enabling this feature allows the user access to AS-525AV ViTrax software only. This ensures uninterrupted server operation and stability, eliminating human error.

Lock Application

AS-525AV ViTrax Client can be locked to ensure that no one has access to server settings except the administrator. The exclusivity mode password is used to unlock the application.

To enable lock application:

1. From the **File** menu, click **Tools** → **Lock Application**. The lock application is now enabled.



Note:

A warning window appears when you click **Lock Application** and says "The application will be locked until exclusivity mode password is provided to unlock. Would you like to unlock now?"

The following prompt screen appears.

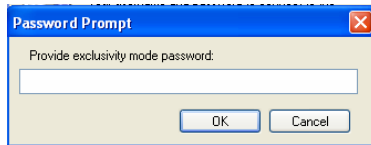


Figure 84: Password Prompt

2. Type in the same password you already chose in the **Exclusivity** tab.



Note:

The unlock password prompt window appears and becomes semi-transparent or hidden while the keyboard input is idle. Everything on the screen will be grayed out so that no one can use the computer while you are not present. Start typing the password and the password prompt window reappears on the screen.

3. Click the **Sounds** tab to attach sound files to specific events.

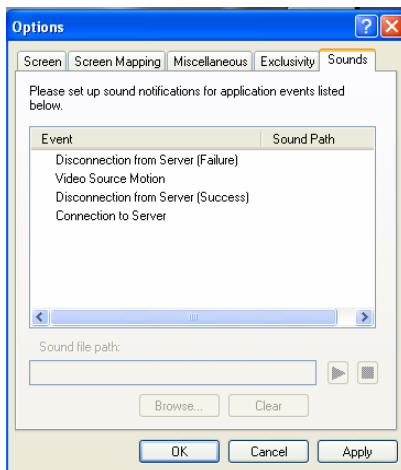


Figure 85: Sounds Tab

Sounds Tab

Under the **Sounds** tab, you are able to set the sound .wav files that will indicate the following events:

- Disconnection from Server (Failure)
- Video Source Motion
- Disconnection from Server (Success)
- Connection to Server

You can browse your computer or the internet to add such .wav files.

Make sure to click **Apply** if you have made any changes to the system's options. To exit at any point, click **Cancel**.

6. AS-525AV ViTrax Video Capabilities

Now that the software is installed and the cameras have been configured, you are ready to learn some of the software's capabilities.

In this chapter, you learn about the following features:

- Making Video Adjustments
- Exporting Video Frames
- Enabling Video Transfer
- Creating Custom Layouts
- Map Module Feature
- Archiving Integrity Wizard
- Archiving Backup Wizard
- Playback Video
- Exporting Video

6.1 Making Video Adjustments

Adjust every individual camera with its own settings through the video adjustment feature. The following settings can be adjusted:

- Brightness
- Contrast
- Saturation
- Sharpness
- Hue

To make video adjustments:

1. Click the Video Amplification icon on the toolbar.



Figure 86: Video Amplification Icon

The Video Adjustment screen opens.

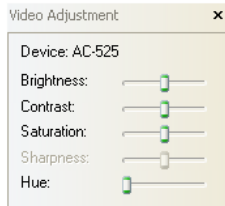


Figure 87: Video Adjustment Screen

2. Slide the handles left or right to adjust the settings

6.2 Exporting Video Frames

The Video Frame Export Setup Wizard allows you to configure continuous saving of video frames on network, fixed storage, or an FTP. Frame exports can be configured for multiple devices. Exported frames are saved in JPEG format using the filename format you specify when configuring the export until it is disabled.

To run the Video Frame Export Setup Wizard:

1. Right-click on the appropriate server in the structure pane.

- Or -

Select menu item **Server→Selected Server**.

2. Click **Tasks**.
3. In the submenu, click **Video Frame Export Setup Wizard**.
4. When the Welcome to the Video Frame Export Setup Wizard opens, click **Next** to continue the installation. The Video Streams window opens.

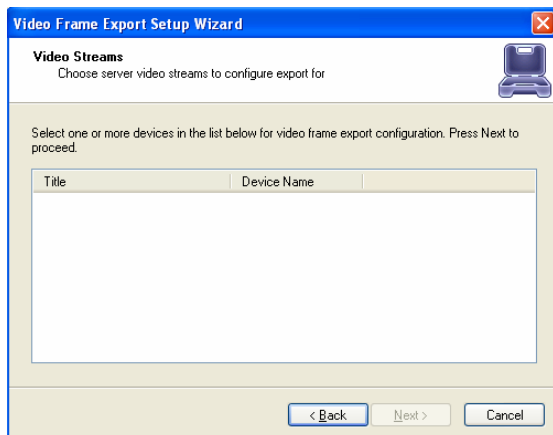


Figure 88: Video Streams Window

5. Select one or more devices from the list for frame export configuration. From this screen, enable or disable the video frame export.

If you want to enable export, click **Properties** to configure it.

The Export Properties window opens.

After you have configured the profiles, continue with the wizard installation. (See Complete the Video Frame Export Setup Wizard on page 88.)

Configure Profile Properties

The Profile Properties allows you to configure the profile settings to export the video frames.

There are two types of profiles:

- file export—prepares the video frames for export to a file
- FTP export —prepares the video frames for export to an FTP site

There are four tabs in the **Properties** window:

File	Select a profile from available list or configure a new profile using the Manage button
Format	Configure the video effects and compression options.
Time Lapse	Process frames while constraining the frame rate. Enable the time lapse to lower the CPU load and leave more CPU time for other tasks.
Motion Control	Motion Control provides an opportunity to process data when only motion is detected.

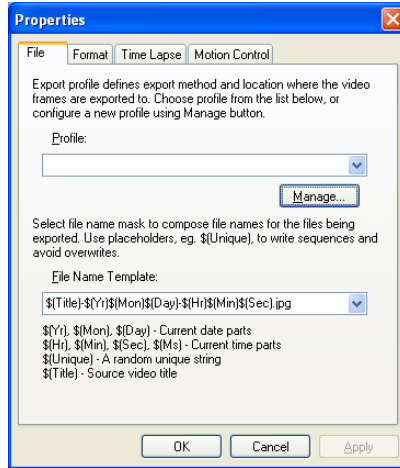


Figure 89: Export Properties Window

1. In the **Profile** area, select an already created profile or create at least one to start using video frame export.
2. In the **File Name Template** area, select a name from the dropdown menu or choose another name.

Each frame is saved in a file with a template string used for formatting the filename.



Note:

Make sure the filename is unique by adding it's time in ms or random unique string (\$(Ms) or \$(Unique) format tags).

3. Click the **Manage** button to create, edit, or delete profiles used to export video frames.



Note:

Reconfiguration of a profile affects all video streams the profile is selected for.

The Profiles Property window opens.

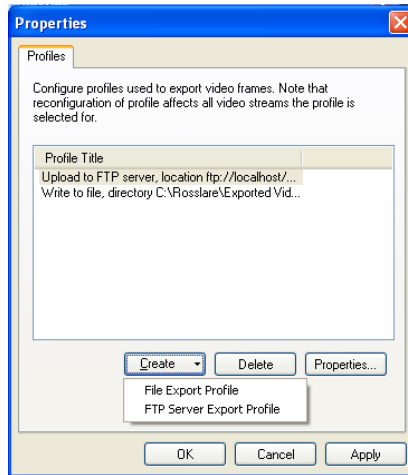


Figure 90: Profiles Properties Window

In the **Profile Title** area, you can edit or delete already created profiles.

4. Click **Create** to open the dropdown menu displaying the export video frames location choice. Choose from the following:
 - File Export Profile
 - FTP Server Profile

File Export Profile

The File Export Profile allows you to export the video frame to a file or directory.

1. Click **File Export Profile**.
2. When the Write to File window opens, specify the desired frame export directory, network storage, or share path in **Directory** or **Browse** for the relevant directory.



Note:

If you are connected remotely, it is important to remember that this is the server side directory.

3. Click **OK** to save the settings and return to the Profiles Properties window.

FTP Server Export Profile

The FTP Server Export Profile allows you to export the video frames to an FTP site.

1. Click **FTP Server Export Profile**.

2. When the FTP Server Export Profile window opens, fill in the appropriate settings to allow Rosslare to connect and save frames here.
3. Click **OK** to save the settings and return to the Profiles Properties window.

Complete the Video Frame Export Setup Wizard

1. Click **Next** to continue the installation. The Action Summary window opens.

This page of the Video Frame Export Setup Wizard gives you a summary of all of the changes that you have made throughout the wizard.
2. Click **Next** to continue the installation. The Wizard Complete window opens.

Congratulations, you have now setup export of frames for the camera(s).
3. Click **Finish** to end the Video Frame Export Setup Wizard.

6.3 Enabling Video Transfer

The video transfer feature allows you to reduce network traffic between AS-525AV ViTrax Server and AS-525AV ViTrax Client (if remotely connected) and/or to decrease CPU load on the client side.

Video transfer reduces the amount of data transferred from server to client by skipping some frames, transferring only motion detected frames, and recompressing or down sampling them without reducing recorded data quantity and quality.

This feature is useful in slow remote connections or highly loaded networks when viewing cameras remotely. It effectively decreases image resolution or transfer fps on low-end systems, where AS-525AV ViTrax client is used for viewing large numbers of cameras. This approach reduces resolution and number of frames, waiting to be rendered on the screens.

To enable video transfer feature:

1. From the **File** menu, click **Video → Transfer**.

The Video Transfer Properties window opens.

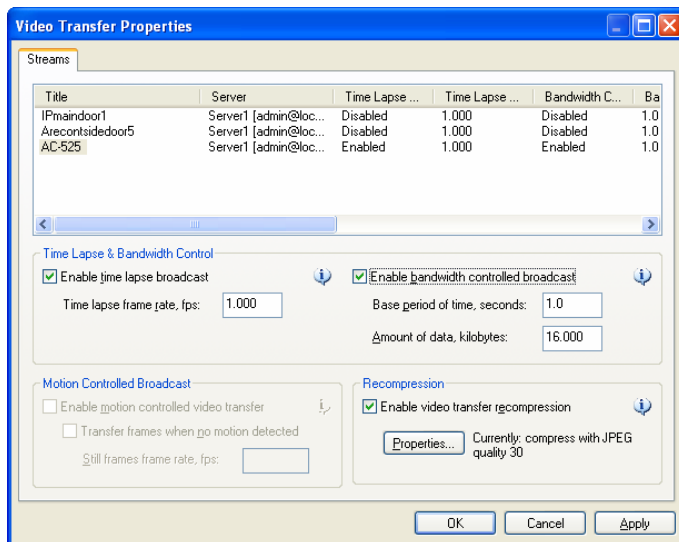


Figure 91: Video Transfer Properties Window

2. In the **Time Lapse & Bandwidth Control** area, only check **Enable time lapse broadcast** checkbox on the remote connection if needed.
3. Check **Enable bandwidth controlled broadcast** if needed to adjust data controlled broadcast.
4. In the **Motion Controlled Broadcast** area, check **Enable motion controlled video transfer** remotely if you want to see video on motion only.
This is very helpful because frame rate is distributed to the cameras that have motion only.
5. Check **Enable video transfer recompression**.



Note:

Vide transfer recompression is useful for remote connections only.

AS-525AV ViTrax can usually record up to three mega pixel images. This feature allows the user to increase the frame rate with less image quality without changing the server properties.

6. Click **OK** to save the settings.

Specify Transfer Defaults for Newly Added Devices

Specify default values of the transfer defaults for newly added devices. All options are identical to the Video Transfer properties.

To specify transfer defaults:

1. Right-click on the server in the structure pane.
2. Click **Properties**. The Properties window opens.
3. Click the **Video Transfer Defaults** tab.

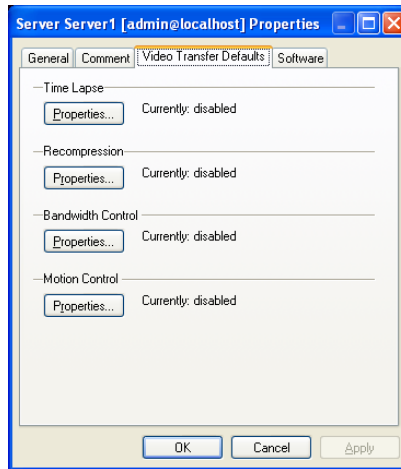


Figure 92: Video Transfer Defaults Tab

4. Set the desired properties in the following areas:
 - Time Lapse
 - Bandwidth Control
 - Motion Control
5. After selecting the settings, click **OK**.

6.4 Creating Custom Layouts

Create custom layouts by grouping cameras from different AS-525AV ViTrax servers/locations into groups for more efficient monitoring and better management.

For example, you can group together all out-door cameras from different location or all POS cameras from all registers.

AS-525AV ViTrax Video Capabilities



Note:

By default, empty screens are filled with available cameras. You can disable the automatic mapping mode feature through the Screen mapping tab in Options.

To create custom layouts:

1. Right-click on Layouts in the structure pane.

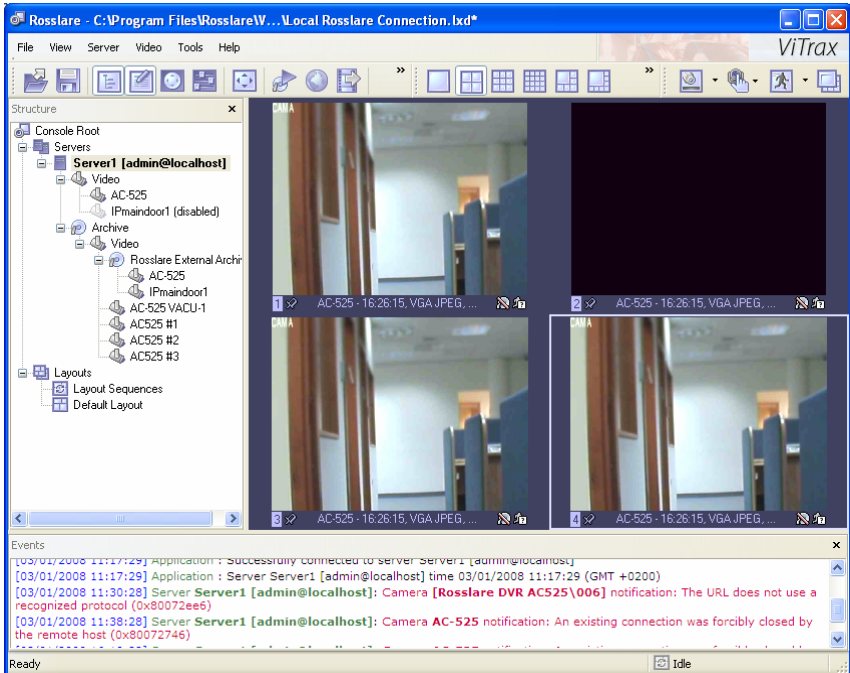


Figure 93: Layouts

There are four options in the dropdown menu:

- Save Current Layout
- Manage Layouts
- Deactivate Active Layout Sequence
- Manage Layout Sequences

Save Current Layout

View and select the current layout in the Structure Pane tree-view. The selected view opens in the Display Pane.

Also access this feature from the menu bar as follows:

To save current layout:

1. Click **View → Select the Save Current Layout**. The Layouts window opens.

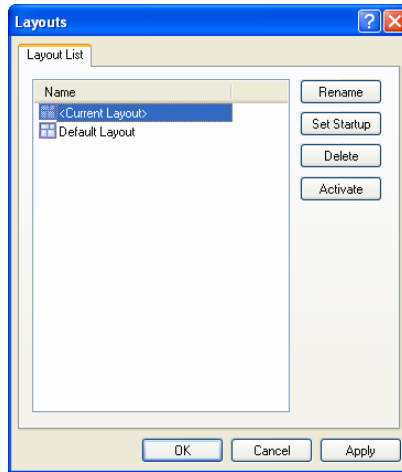


Figure 94: Layout List Window

2. Modify the current layout by selecting the Current Layout in the Name box and using the following buttons to make the changes:

Rename	Renames current layout
Set Startup	Program opens with this layout when starting up
Delete	Deletes current layout
Activate	Activates current layout

Create New Layout Sequence

When layouts are created, they can be used for sequencing.

To create sequences:

1. Right-click on **Layout**.
2. Click **Manage Layout Sequences** from the submenu.
The Layout Sequences window opens.

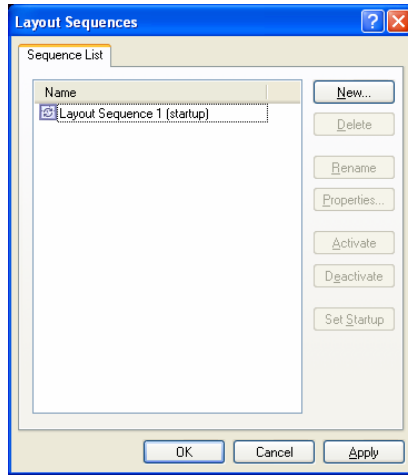


Figure 95: Layout Sequences Window

3. Click **New** to create a new sequence. The Layout Sequence Properties window opens.

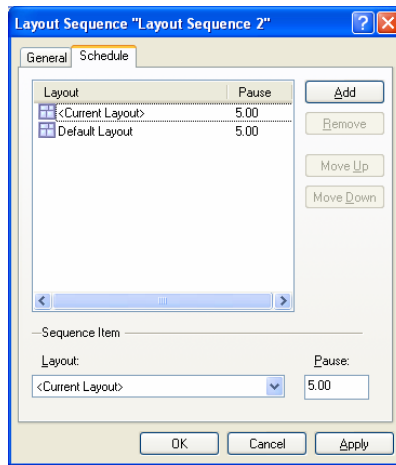


Figure 96: Schedule Window

4. Click the **Schedule** tab.
5. Click **Add** or **Remove** to add or remove sequences.
6. Click **Move Up** or **Move Down** to manage priority or remove layouts of the choice.

7. In the **Layout** area, choose existing layouts from the dropdown menu to add to a sequence.
8. In **Pause**, set the time interval between layouts.
9. After completing the desired settings, click **OK**.

6.5 Map Module Feature

The map module feature allows you to quickly and conveniently locate cameras for viewing placed on Google Map and/or on the own floor plans added in JPEG format.

To start the map module feature:

1. Click the map icon on the toolbar.



Figure 97: Map module icon

AS-525AV ViTrax Maps window opens.

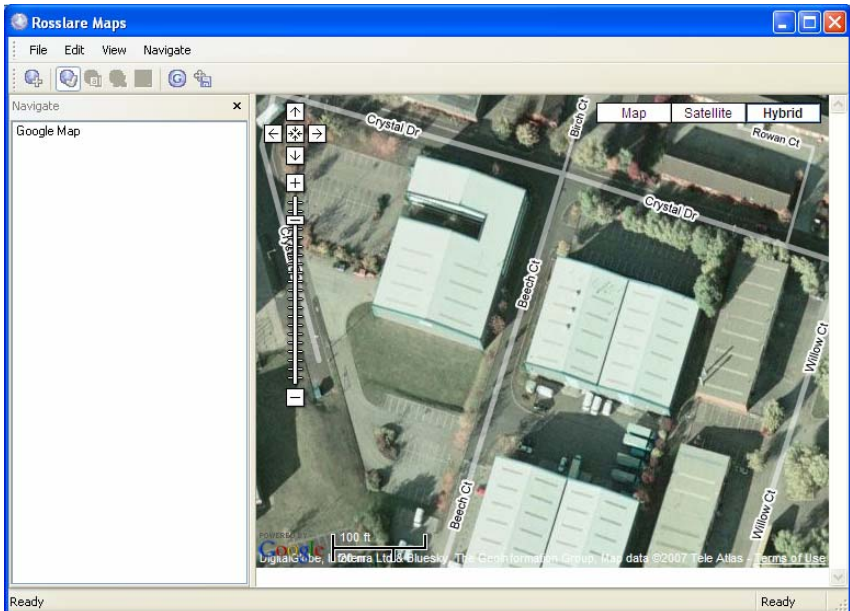


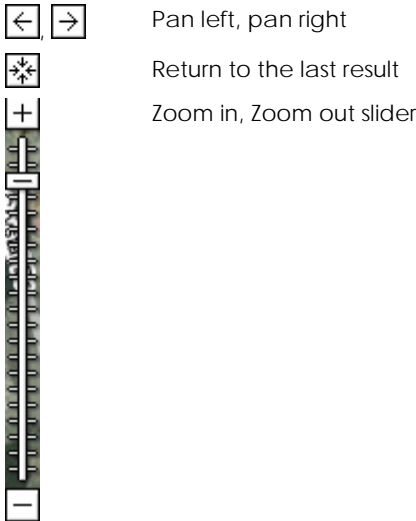
Figure 98: AS-525AV Maps Window

Use the navigational tools to navigate around the map.



Pan up, pan down

AS-525AV ViTrax Video Capabilities



Use the view buttons on the map to display different views of the map

- Map** Shows a street map
- Satellite** Shows satellite imagery
- Hybrid** Shows satellite imagery with street names

2. Right-click on the map and use context menu commands to configure and control map features.

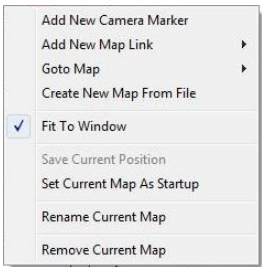


Figure 99: Context Menu Commands

- Add New Camera Marker** This option adds a camera marker in designated menu (See Add New Camera Marker below)
- Goto Map** Navigate to other maps in appeared list

Create New Map From File	Add new map from JPEG image file to be used as background
Fit To Window	The JPEG map strains on the window while maintaining its aspect ratio
Save Current Position	Used in Google map to save its current position
Set Current Map As Startup	Sets current map as startup map. Selected map loads when viewing this map module
Rename Current Map	Rename currently selected map
Remove Current Map	Delete currently selected map

Add New Camera Marker

1. After choosing this menu option, select from a list of servers and cameras.
2. After adding new marker, double click on the marker to activate the matching camera.

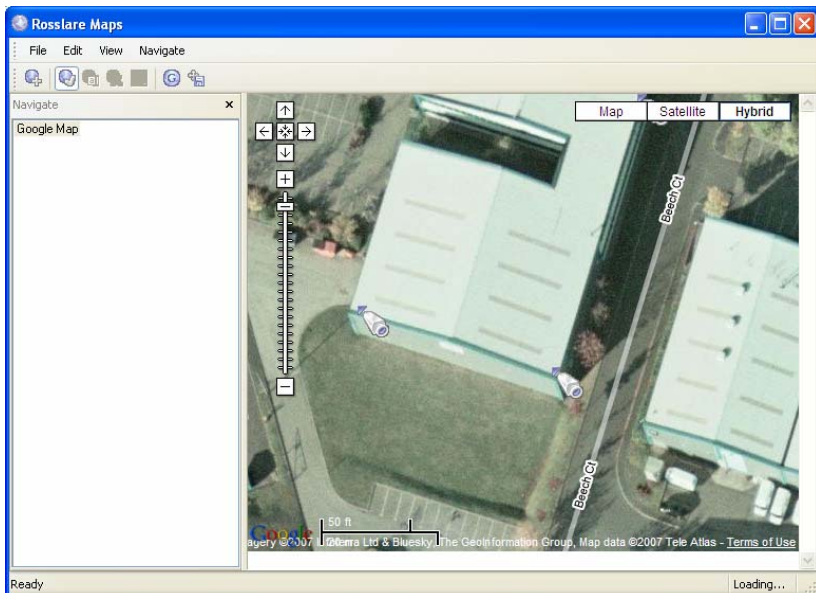


Figure 100: Add New Camera Marker

3. To remove the marker, right-click on the marker and choose according to popup menu item.

6.6 Archiving Integrity Wizard

Archive Integrity Wizard repairs parts of damaged archive data that was lost due to power losses or hardware problems.

Lost data cannot be repaired using this wizard, but the wizard finds and removes damaged parts of the archive to restore archive structure and functionality. However you should check third party tools which can be used for repairing hard drive sectors and/or recovering bad sectors.

This wizard can also delete specific stream from the archive.



Note:

This wizard works only on the same machine where AS-525AV ViTrax server is installed.

To run the Archive Integrity wizard:

1. From the **Start** menu, click the **Rosslare** menu folder.
2. Click **Tools** in the subfolder.
3. Select **DVR Server Archive Integrity Wizard**. When the Introduction to the Archive Integrity Wizard opens, click **Next** to continue.

If AS-525AV ViTrax server is running on the same machine, an additional page opens.

You need to decide to either stop the server or continue using this wizard without terminating the server.



Note:

It is recommended that you terminate the server before using the wizard for the wizard requires exclusive access to the archive files.

If you do not want or are unable to terminate the server, try using this wizard on the archive on one drive while the server is writing it on another drive.

4. Select one or more archives from the list.



Note:

If any file in the archive is locked by another process, the entire archive on this drive is marked "locked" and is not selectable.

The Archive Location Selection window opens.

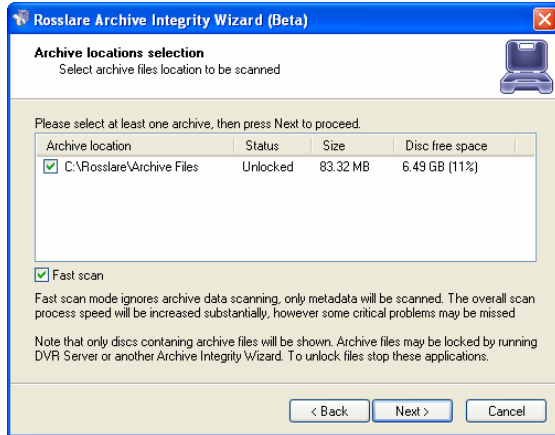


Figure 101: Archive Location Selection

Rosslare recommends that you check **Fast scan** mode. Fast scan scans archive metadata only.

5. Click **Next** to continue the wizard. The Preliminary scan review window opens.

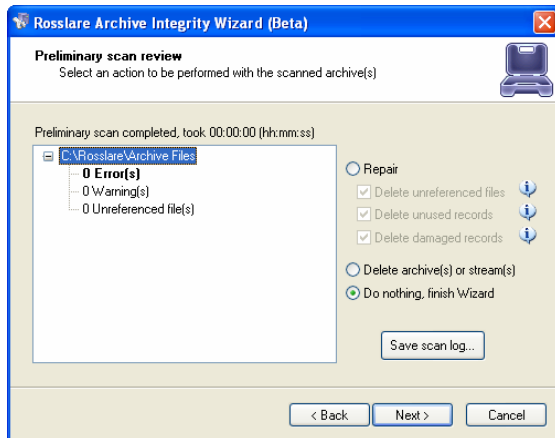


Figure 102: Preliminary Scan Review Window

This screen displays information about archive errors and warnings.

6. Click **Repair** to delete unreferenced files, unused records, or damaged records.

AS-525AV ViTrax Video Capabilities

Unreferenced files	Deletes files not used by AS-525AV ViTrax archive
Unused records	Deletes records in files not used by AS-525AV ViTrax archive and marked as deleted
Damaged records	Deletes damaged records

- Or -

Click **Delete archive (s) or stream(s)** to delete streams or archives.

- Or -

Click **Do nothing, finish Wizard** to exit from the wizard.

7. Click **Next** to continue the wizard. The Select archives or streams to delete window opens.

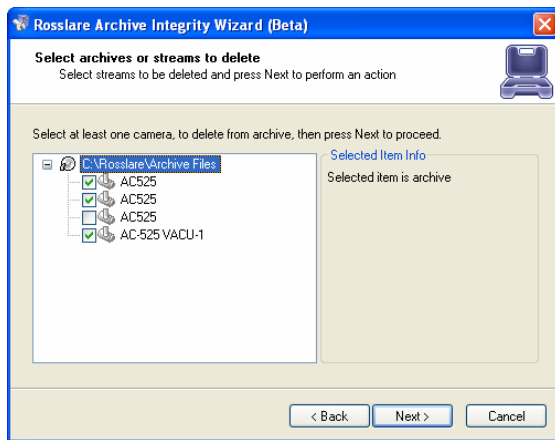


Figure 103: Select Archives or Streams to Delete Window

Select stream to be deleted from the archive list.

8. Click **Next** and then **Finish** to finish running the Archive Integrity wizard.

6.7 Archiving Backup Wizard

The purpose of the Archive Backup wizard is to backup specific parts of the archive or burn CD/DVD with the archive and Archive Viewer on it. This can be useful to create backup copies of the archive with lower fps, or writing specific part of the archive on the CD for other machines without AS-525AV ViTrax installed on them.

**Note:**

This wizard works only on the same machine AS-525AV ViTrax server is installed.

To run the Archive Integrity wizard:

1. From the **Start** menu, click the **Rosslare** menu folder.
2. Click **Tools** in the subfolder.
3. Select **DVR Server Archive Backup Wizard**. When the Introduction to the Archive Backup Wizard opens, click **Next** to continue the Archive Backup wizard. The Select cameras to backup window opens.

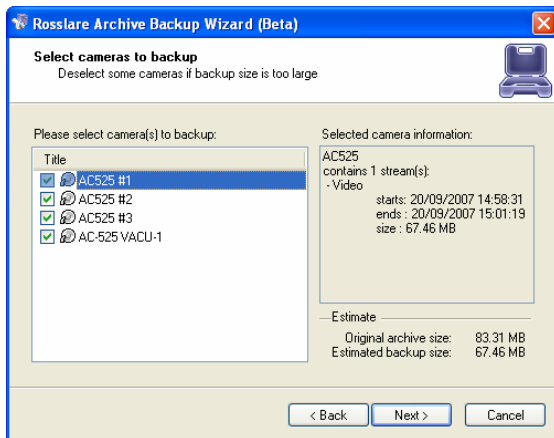


Figure 104: Select Cameras to Backup Window

4. Select one or more cameras you want to backup from the list.
In the Estimate area, you can see estimates of original archive size and estimated backup size on every page in this wizard.



Note:

You can decrease the estimate size by deselecting some of the cameras, changing the time range. Or decreasing fps (frames per second) of archives already backed up.

- Click **Next** to continue the wizard. The Time Selection screen opens.

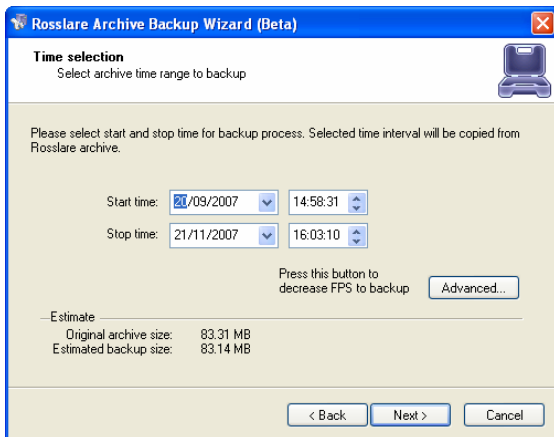


Figure 105: Time Selection Window

- Enter a start and stop time to change a time range.
- Click **Advanced** to decrease the backup of FPS. The Advanced Backup Options window opens.

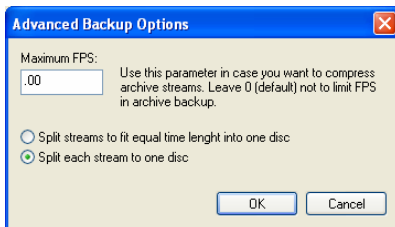


Figure 106: Advanced Backup Options

- In Maximum FPS, enter a number smaller than the displayed number to decrease the backup of FPS.
- Click **OK** to save the settings and return to the Time selection window.
- Click **Next** to continue the wizard. The Backup Destination window opens.

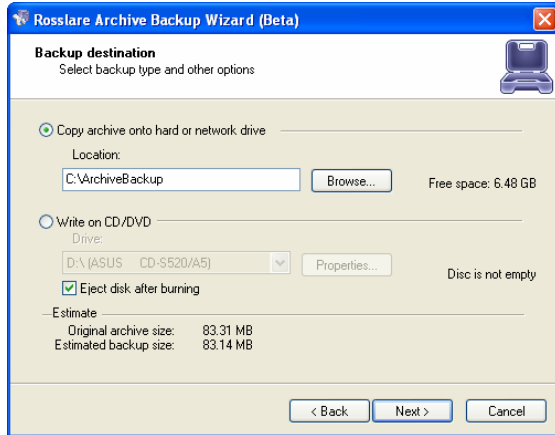


Figure 107: Backup destination Window

11. Select backup type by clicking **Copy archive onto hard or network drive**.
12. In Location area, enter desired location to store backup or browse to select a location. This is a fixed storage backup destination location.

- OR -

Click **Write on CD/DVD**.

In the Drive area, enter desired drive to store backup or browse to select a drive.

Click **Properties** to set CD/DVD burning options. The Advanced CD/DVD Options window opens.

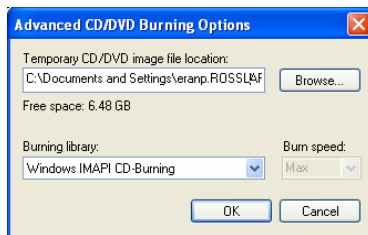


Figure 108: Advanced CD/DVD Burning Options Window

In Temporary CD/DVD image file location, enter a file location or browse to select a location.

In Burning library, select either Nero Burning ROM (requires NERO to be installed) or IMAPI.

AS-525AV ViTrax Video Capabilities

After completing the settings, click **OK** to return to the Backup destination window.

13. Click **Next** to continue to the Backup wizard finish screen.

6.8 Playback Video

Playback the recorder videos with the playback feature.

To playback the recorder video:

1. Right-click on the server name in the structure pane.
2. Select **Tasks** → **Open archive**

or

Right-click on any camera view and select **Open archive**. The Archive window opens.

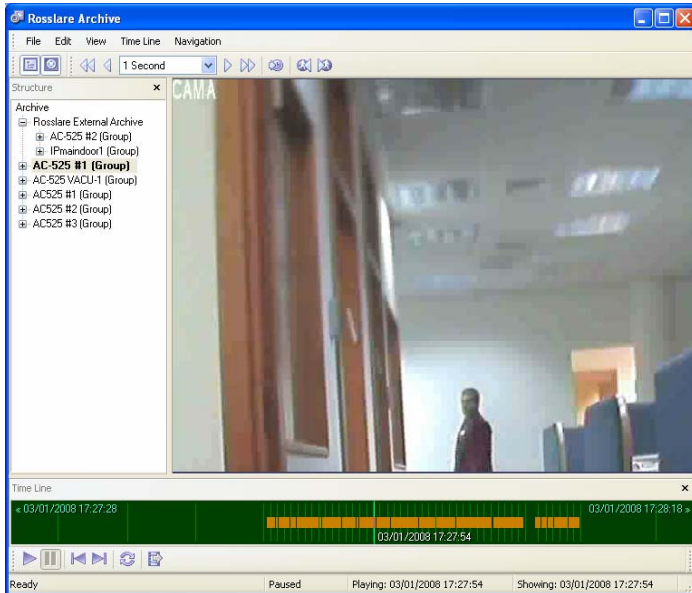


Figure 109: Playback Screen

Understand the Playback Screen

Now that you are in the playback screen, the structure pane on the left lists all of the cameras that you have recordings for.

Double click on the camera for playback. This camera now appears with footage on the video screen.

The Playback screen contains the following:

Color coded time line

The solid green line on the bottom represents time. The light green lines represent recorded video. The orange lines represent motion information.

VCR basic controls



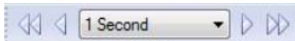
There are basic VCR controls on the bottom of the playback screen, which you can use to play, pause, forward, and rewind.

Job dial



You can drag in either direction to browse through the video in high speeds.

Fast forward arrow controls



Use the arrow controls on top of the screen to define how many increments of time you would like to move through the video or select from the dropdown menu:

- 1 Second
- 10 Seconds
- 1 Minute
- 10 Minutes
- 1 Hour

Playback motion



Use these **previous motion** or **seek next motion** buttons to seek video with actual motion in order to save time

Smart search

You can search the screen through video and also by motion in a specific part of the camera screen.

You can define a specific object in the view, or define a path, and seek through motion only in that specific region.

Define motion of interest

Select a specific area on the screen to define motion (See below)

To define motion of interest:

1. From the menu bar click **Navigation → Define Region of Motion Interest**.

The Region of Motion Interest toolbox opens.

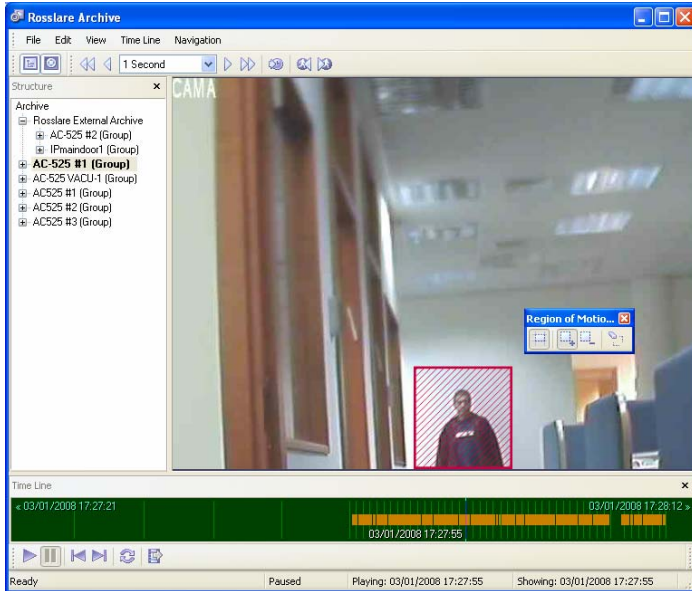


Figure 110: Region of Motion Interest Toolbox

2. Click the **seek to previous motion** or **seek to next motion** icons to search through motion in the defined area or areas.

6.9 Exporting Video

Use the Export wizard to export video. To prevent the section of recordings you want to export from being overwritten, first select the recordings you want to export to a different location before running this wizard.

To run the Export wizard:

1. Click **Edit** on the playback screen.
2. Click **Export Wizard**.

The Video Stream window opens.

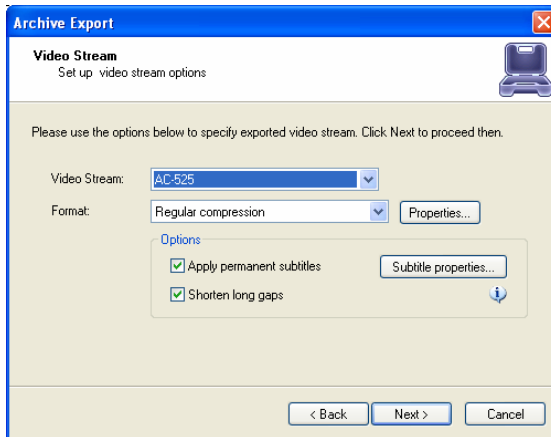


Figure 111: Video Stream Window

3. In **Video Stream**, enter the camera you want to import video stream from or select from the dropdown menu.
4. In **Format**, select from the following options:
 - Regular compression
 - Keep original compression
 - Regular compression
 - No compression (raw frames)
5. Click **Next** to continue the wizard. The Export Options window opens.

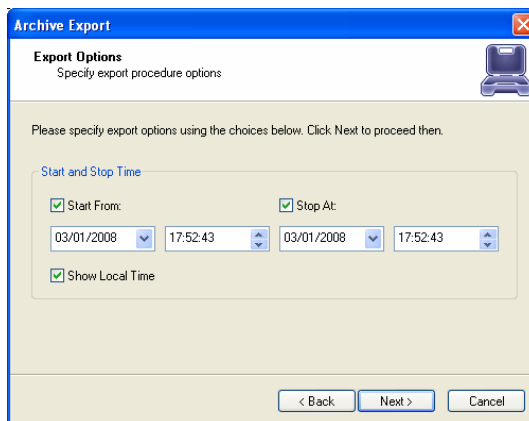


Figure 112: Export Options

This screen allows you to specify export procedure options.

In the Start and Stop Time area, select the start and stop times of the video clip you want to export.

6. Click **Next** to continue the wizard. The Wizard guides you to designate which drive or folder to save the export video in.



Note:

To play back the Rosslare AVI file, you must install a codec (small executable file) in order for the media player to recognize AS-525AV ViTrax video file.

Contact Technical Support at +972 3 938-6838

Export Snapshots

Another way to export video is to save one frame at a time, like a snapshot.

To export snapshots:

1. Use the VCR basic control tools in the playback screen to pause the video on the picture you want to copy.
2. From the **File** menu, click **Edit → Save Current Frame As...**
3. Select a location and filename for the image.
4. Click **Save**.

Now you have the image stored in order to print, e-mail, or enhance that snapshot.

7. Upgrading AS-525AV ViTrax Software

To check for upgrades and new versions contact Rosslare Technical Support on +972 3 938-6838 or at support.na@rosslaresecurity.com.

Updating the software requires all AS-525AV ViTrax services to stop before Installation.

During the installation of the new version you may encounter a message with regards to previous installation configurations, if applicable. Specifically, would you like to use existing database?

1. Click **Yes** to keep all current configurations of the server. This is the recommended option.
or
2. Click **No** to start a new database. All previous settings and configurations are erased and a new database is created.

Continue with the installation (see Installing AS-525AV ViTrax PC Software on Page 9.)

Appendix A. Limited Warranty

ROSSLARE ENTERPRISES LIMITED S (Rosslare) TWO YEARS LIMITED WARRANTY is applicable worldwide. This warranty supersedes any other warranty. Rosslare's TWO YEARS LIMITED WARRANTY is subject to the following conditions:

Warranty

Warranty of Rosslare's products extends to the original purchaser (Customer) of the Rosslare product and is not transferable.

Products Covered By This Warranty and Duration

ROSSLARE ENTERPRISES LTD. AND / OR SUBSIDIARIES (ROSSLARE) warrants that the AS-525, to be free from defects in materials and assembly in the course of normal use and service. The warranty period commences with the date of shipment to the original purchaser and extends for a period of 2 years (24 Months).

Warranty Remedy Coverage

In the event of a breach of warranty, ROSSLARE will credit Customer with the price of the Product paid by Customer, provided that the warranty claim is delivered to ROSSLARE by the Customer during the warranty period in accordance with the terms of this warranty. Unless otherwise requested by ROSSLARE ENTERPRISES LTD. AND / OR SUBSIDIARIES representative, return of the failed product(s) is not immediately required.

If ROSSLARE has not contacted the Customer within a sixty (60) day holding period following the delivery of the warranty claim, Customer will not be required to return the failed product(s). All returned Product(s), as may be requested at ROSSLARE ENTERPRISES LTD. AND /OR SUBSIDIARY'S sole discretion, shall become the property of ROSSLARE ENTERPRISES LTD. AND /OR SUBSIDIARIES.

To exercise the warranty, the user must contact Rosslare Enterprises Ltd. to obtain an RMA number after which, the product must be returned to the Manufacturer freight prepaid and insured

In the event ROSSLARE chooses to perform a product evaluation within the sixty (60) day holding period and no defect is found, a minimum US\$ 50.00 or equivalent charge will be applied to each Product for labor required in the evaluation.

Rosslare will repair or replace, at its discretion, any product that under normal conditions of use and service proves to be defective in material or workmanship. No charge will be applied for labor or parts with respect to defects covered by this warranty, provided that the work is done by Rosslare or a Rosslare authorized service center.

Exclusions and Limitations

ROSSLARE shall not be responsible or liable for any damage or loss resulting from the operation or performance of any Product or any systems in which a Product is incorporated. This warranty shall not extend to any ancillary equipment not furnished by ROSSLARE, which is attached to or used in conjunction with a Product, nor to any Product that is used with any ancillary equipment, which is not furnished by ROSSLARE.

Appendix

This warranty does not cover expenses incurred in the transportation, freight cost to the repair center, removal, or reinstallation of the product, whether or not proven defective.

Specifically excluded from this warranty are any failures resulting from Customer's improper testing, operation, installation, or damage resulting from use of the Product in other than its normal and customary manner, or any maintenance, modification, alteration, or adjustment or any type of abuse, neglect, accident, misuse, improper operation, normal wear, defects or damage due to lightning or other electrical discharge. This warranty does not cover repair or replacement where normal use has exhausted the life of a part or instrument, or any modification or abuse of, or tampering with, the Product if Product disassembled or repaired in such a manner as to adversely affect performance or prevent adequate inspection and testing to verify any warranty claim.

ROSSLARE does not warrant the installation, maintenance, or service of the Product. Service life of the product is dependent upon the care it receives and the conditions under which it has to operate.

In no event shall Rosslare be liable for incidental or consequential damages.

Limited Warranty Terms

THIS WARRANTY SETS FORTH THE FULL EXTENT OF ROSSLARE ENTERPRISES LTD. AND IT'S SUBSIDIARIES'S WARRANTY

THE TERMS OF THIS WARRANTY MAY NOT BE VARIED BY ANY PERSON, WHETHER OR NOT PURPORTING TO REPRESENT OR ACT ON BEHALF OF ROSSLARE.

THIS LIMITED WARRANTY IS PROVIDED IN LIEU OF ALL OTHER WARRANTIES. ALL OTHER WARRANTIES EXPRESSED OR IMPLIED, INCLUDING WITHOUT LIMITATION, IMPLIED WARRANTIES OF MERCHANTABILITY AND FITNESS FOR A PARTICULAR PURPOSE, ARE SPECIFICALLY EXCLUDED.

IN NO EVENT SHALL ROSSLARE BE LIABLE FOR DAMAGES IN EXCESS OF THE PURCHASE PRICE OF THE PRODUCT, OR FOR ANY OTHER INCIDENTAL, CONSEQUENTIAL OR SPECIAL DAMAGES, INCLUDING BUT NOT LIMITED TO LOSS OF USE, LOSS OF TIME, COMMERCIAL LOSS, INCONVENIENCE, AND LOSS OF PROFITS, ARISING OUT OF THE INSTALLATION, USE, OR INABILITY TO USE SUCH PRODUCT, TO THE FULLEST EXTENT THAT ANY SUCH LOSS OR DAMAGE MAY BE DISCLAIMED BY LAW.

THIS WARRANTY SHALL BECOME NULL AND VOID IN THE EVENT OF A VIOLATION OF THE PROVISIONS OF THIS LIMITED WARRANTY.

Appendix B. Technical Support

Asia Pacific, Middle East, Africa

Rosslare Security Products Headquarters

905-912 Wing Fat Industrial Bldg,

12 Wang Tai Road,

Kowloon Bay Hong Kong

Tel: +852 2795-5630

Fax: +852 2795-1508

E-mail: support.apac@rosslaresecurity.com

United States and Canada

1600 Hart Court, Suite 103

Southlake, TX, USA 76092

Toll Free: +1-866-632-1101

Local: +1-817-305-0006

Fax: +1-817-305-0069

E-mail: support.na@rosslaresecurity.com

Europe

Global Technical Support & Training Center

HaMelecha 22

Rosh HaAyin, Israel 48091

Tel: +972 3 938-6838

Fax: +972 3 938-6830

E-mail: support.eu@rosslaresecurity.com

South America

Pringles 868, 1640 Martinez

Buenos Aires

Argentina

Tel: +54 11 4798-0095

Fax: +54 11 4798-2228

E-mail: support.la@rosslaresecurity.com

Web Site: www.rosslaresecurity.com

ROSSLARE
SECURITY PRODUCTS

www.rosslaresecurity.com



0706-0960229+00